

**SPIRIT**  
ULTRA LITE

CAMPING  
SIMPLIFIED



Exterior dog  
leash clip



Laundry  
hamper



Motion activated  
floor lights



Check out the  
Spirit Video

The ALL-NEW Spirit travel trailer is the most user-friendly Ultra Lite on the market today!

Spirit is loaded with convenient features for the best camping experience possible.

Eye-catching Features Include:

- Store-More cargo center / 60" x 80" bed
- U-shaped dinette / Pet center
- Quick connect stabilizer jack bit

**Coachmen**  
Recreational Vehicles  
A division of Forest River, Inc.

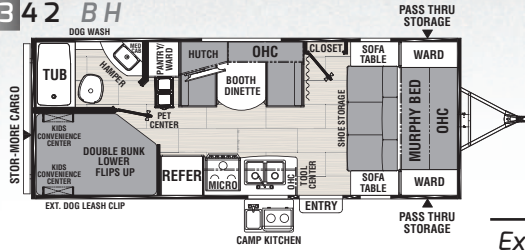
## Camping Simplified Model Naming

First 2 numbers = Approximate box length

Second 2 numbers = Approximate weight

2 Letters = Floor plan description

2342 BH



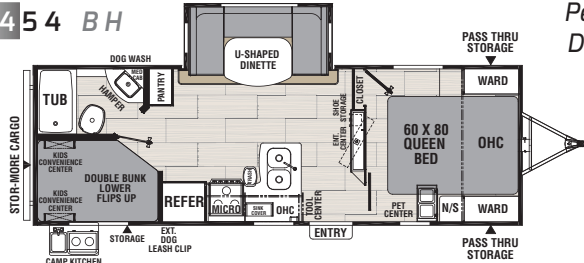
### Pet Features:

Exterior dog leash clip

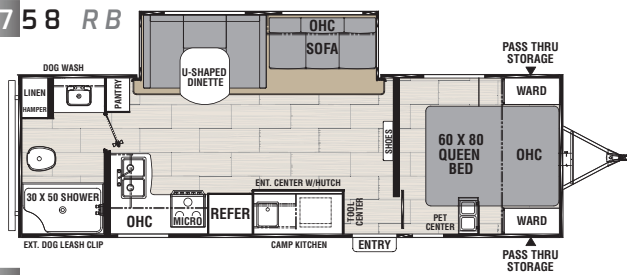
Pet center

Dog wash

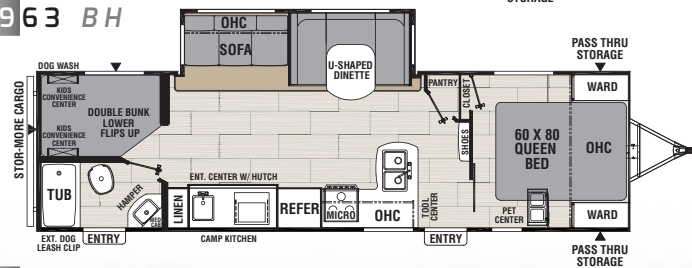
2454 BH



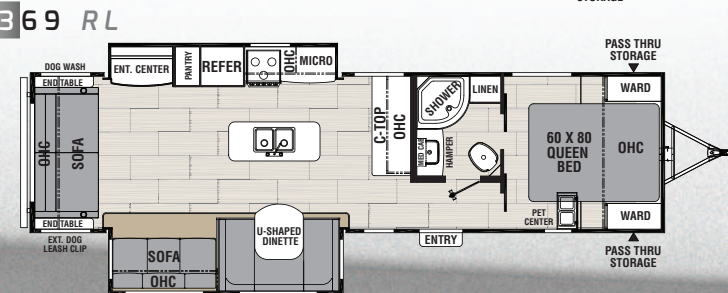
2758 RB



2963 BH



3369 RL



### More Unbeatable Features:

Sofa touch lights / Sink cover storage / Motion activated pass-through storage light  
 Valuables hutch / Hanger closet / Bottle opener / Exterior fishing pole storage  
 Dual ducted A/C / Lighted USBs (5 in 2963 BH) / Kids convenience center  
 Heated and enclosed underbelly

	2342 BH	2454 BH	2758 RB	2963 BH	3369 RL
Hitch Weight (lbs.)	586	770	728	760	N/A
Carrying Capacity (lbs.)	1,500	2,098	1,466	1,192	N/A
UVW (lbs.)	4,681	5,462	6,134	6,408	N/A
Exterior Length (Includes Bumper to Hitch)	25' 5"	28' 9"	30' 11"	33' 11"	35' 11"
Exterior Height (Includes A/C)	11'	11' 1"	11' 1"	11' 1"	11' 3"
Awning Length	17'	18'	18'	18'	10'
Fresh Water Capacity (gal.)	49	49	49	49	49
Grey Water Capacity (gal.)	33	33	33	33	33
Waste Water Capacity (gal.)	33	33	33	33	33
Wheel Size	14"	14"	14"	14"	15"

**GVWR (Gross Vehicle Weight Rating)** - is the maximum permissible weight of the unit when fully loaded. It includes all weights, inclusive of all fluids, cargo, optional equipment and accessories. For safety and product performance do NOT exceed the GVWR.

**GAWR (Gross Axle Weight Rating)** - is the maximum permissible weight, including cargo, fluids, optional equipment and accessories that can be safely supported by a combination of all axles.

**UVW (Unloaded Vehicle Weight)\*** - is the typical weight of the unit as manufactured at the factory. It includes all weight at the unit's axle(s) and tongue or pin and LP Gas. The UVW does not include cargo, fresh potable water, additional optional equipment or dealer installed accessories.

\*Estimated Average based on standard build optional equipment.

**CCC (Cargo Carrying Capacity)\*\*** - is the amount of weight available for fresh potable water, cargo, additional optional equipment and accessories. CCC is equal to GVWR minus UVW. Available CCC should accommodate fresh potable water (8.3 lbs per gallon). Before filling the fresh water tank, empty the black and gray tanks to provide for more cargo capacity.

\*\*Estimated average based on standard build optional equipment.

Each Forest River unit is weighed at the manufacturing facility prior to shipping. A label identifying the unloaded vehicle weight of the actual unit and the cargo carrying capacity is applied to every Forest River RV prior to leaving our facilities. The load capacity of your unit is designated by weight, not by volume, so you cannot necessarily use all available space when loading your unit.

All information contained in this brochure is believed to be accurate at the time of publication. However, during the model year, it may be necessary to make revisions and Forest River, Inc. reserves the right to make all such changes without notice, including prices, colors, materials, equipment and specifications as well as the addition of new models and the discontinuance of models shown in this brochure. Therefore, please consult with your Forest River dealer and confirm the existence of any materials, design or specifications that are material to your purchase decision. ©2017 Spirit by Coachmen RV, a Division of Forest River, Inc., a Berkshire Hathaway company. All rights reserved. 6/18

To learn more about Coachmen RV and our products and see how Coachmen is making the easy life easier, visit [www.coachmenrv.com](http://www.coachmenrv.com)



Learn More  
Scan this barcode using a QR Reader on your smart phone to learn more about Forest River.



A Berkshire Hathaway company.