

CHAPARRAL



**HALF-TON
Towable!**



Introducing the **NEW**
CHAPARRAL
OPEN TRAIL

You asked for it, you got it. The "Lean and Mean" Chaparral Open Trail will offer the quality you have come to expect from the Coachmen product.

CHAPARRAL OPEN TRAIL



FEATURES

- Laminated aluminum floor and side walls with Azdel composite panels inside
- Outside shower
- Heated enclosed underbelly
- Pass through storage
- Leather style furniture
- Seamless thermo-foil countertops



Designer Carefree Flooring
with 3 Year Warranty

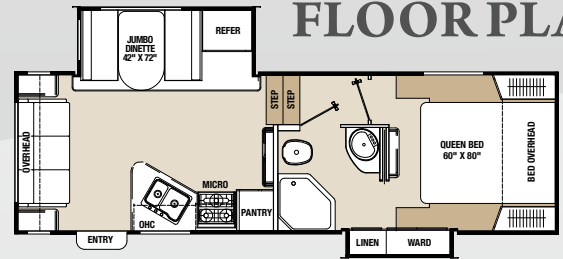


Aluminum Frame Floor
and Side Wall Construction

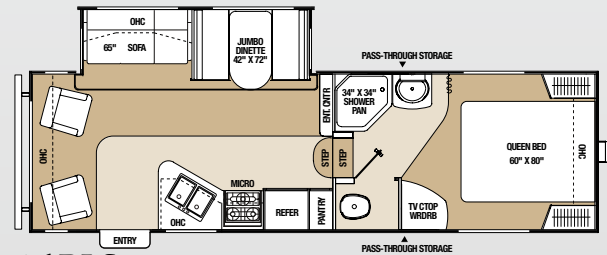
SPECIFICATIONS

Model	Hitch Weight	Base Weight	GVWR	Cargo Carrying Capacity	Exterior Length	Exterior Height	Exterior Width	Fresh Water Cap./Gal.	Gray Water Cap./Gal.	Black Water Cap./Gal.	Awning
25 RLS	1,300 lbs	6,986 lbs.	9,500 lbs.	2,340 lbs.	28' 5"	11' 11"	96"	47	42	42	12'
26 RLS	1,098 lbs.	6,536 lbs.	9,800 lbs.	2,562 lbs.	29' 2"	11' 11"	96"	47	42	30	18'
27 RKS	1,146 lbs.	6,746 lbs.	9,800 lbs.	2,399 lbs.	30' 3"	11' 11"	96"	47	84	42	20'
28 BHS	1,440 lbs.	8,160 lbs.	11,000 lbs.	2,781 lbs.	33' 8"	11' 11"	96"	40	84	42	17'

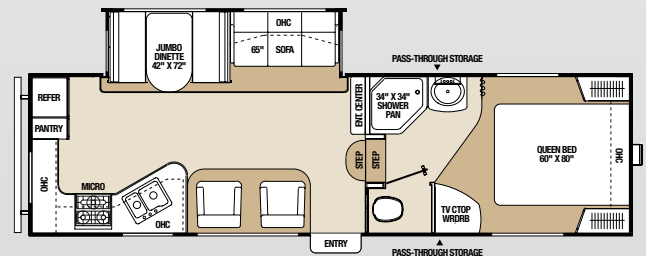
FLOOR PLANS



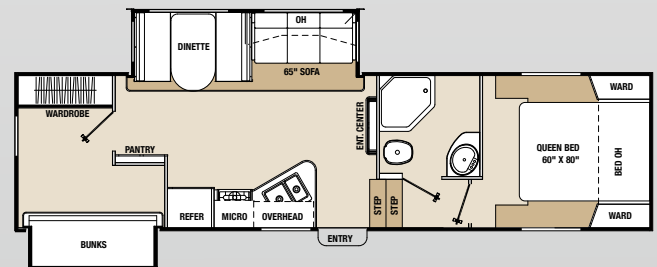
25 RLS



26 RLS



27 RKS



28 BHS

Coachmen RV
A Division of Forest River Inc.
423 N. Main St.
P.O. Box 30
Middlebury, IN 46540

To learn more about Coachmen RV and our products and see how Coachmen is making the easy life easier, visit www.coachmenrv.com



A Berkshire Hathaway Company

Your Dealer:

All information contained in this brochure is believed to be accurate at the time of publication. However, during the model year, it may be necessary to make revisions and Coachmen reserves the right to make all such changes without notice, including changes in prices, colors, materials, equipment and specifications, as well as the addition of new models and the discontinuance of models shown in this brochure. Therefore, please consult with your Coachmen dealer and confirm the existence of any materials, design or specifications that are material to your purchase decision.