

COACHMEN CLASS C TRAINING GUIDE

2020 & 2021 Models

Product Produced between September 2019 thru August 2020



**WE CREATE
CUSTOMERS
FOR LIFE**

THE HISTORY OF COACHMEN RV

- Coachmen RV was founded by three brothers: Tom, Keith and Claude Corson in 1964.
- The first Coachmen RV products were manufactured in a 5,000 square foot plant in downtown Middlebury, Indiana.
- Coachmen's first year of production totaled 12 travel trailers, a single truck camper and 80 truck caps. Since then, over 750,000 Coachmen recreational vehicles have been produced.
- In December of 2008, Coachmen RV became a proud brand of Forest River, Inc., a Berkshire Hathaway company.
- Today - Coachmen RV is headquartered in Middlebury, Indiana, with our primary manufacturing facilities occupying over 220 acres with more than 23 acres under roof serving as dedicated manufacturing facilities. Our Camping Trailers are manufactured in our Centerville, Michigan, facilities occupying 90 acres.

GUIDING PRINCIPLES

"Dedicated to the enrichment of your life"

- Providing customers with long term value through all that we do. Our focus is on producing a product with superior value and backing it through superior service and support.
- Once you become a Coachmen owner, we are committed to enhancing your Coachmen RV ownership and lifestyle experience... creating friends for life and memories that will last a lifetime.

CUSTOMER SATISFACTION IS #1



DEALERS ARE NOT FRANCHISED

Unlike the auto industry, our Dealer partners are independent from Forest River/Coachmen RV and therefore are only obligated to service the RV's that are purchased from them.

DEALERS ARE INDEPENDENTLY OWNED & OPERATED

Service and scheduling is at their discretion and priority is commonly provided to customers that purchased from their dealership.

DEALER BUYING EXPERIENCE

Pre-Delivery Inspections and the product orientation are often more thorough and convenient for both the customer and dealer when performed by your local dealer. Proximity to your dealership determines the ease of follow up on questions that may arise.

DEALER CONVENIENCE

Your first uses may result in some needed adjustments and tweaks. Often referred to as "shake down," these minor adjustments are much more easily addressed by the local dealer you made your purchase through.

DEALER SERVICE

Scheduling timely warranty repairs and adjustments through your local dealership provides far greater flexibility and convenience to you the customer!

DEALER RELATIONSHIP

Purchasing locally allows you to establish longstanding personal relationships with your dealer, enhancing your overall experience and adding value during future purchases and transactions.

DEALER ADDED VALUE

Local dealers are more readily available to assist their loyal customers with product questions, user tips, and are more knowledgeable regarding uses and regulations within the dealer's region.

DEALER TRAINING

Your dealer's knowledge of how your product is serviced and maintained can help to enhance its value when you make a trade.

DEALER TEAM MEMBERS

Buying locally provides you a greater opportunity to develop relations not only with the dealer principal and managers, but also those team members at the dealership who actually service your product.

DEALER COMMUNITY SUPPORT

Buying locally helps you support a local businesses who in turn supporting your community by providing jobs and aiding the local economy.

OUR PROMISE

With one of the largest North American Dealer Networks, Forest River is committed to helping our customers with service when they are in transit and far from their local dealer.



COACHMEN RV LIMITED WARRANTY:

- 12 Month /12,000 Mile Limited Bumper-to-Bumper

***FORD CHASSIS WARRANTY:**

- Chassis – 36 month/36,000 mile Limited Bumper-to-Bumper
- Powertrain – 60 month/60,000 mile

***CHEVY CHASSIS WARRANTY:**

- Chassis – 36 month/36,000 mile Limited Bumper-to-Bumper
- Powertrain – 60 month/60,000 mile

***ONAN GENERATOR WARRANTY:**

- 2 Year Limited

***DOMETIC WARRANTY:**

- Air Conditioner, Refrigerator, Water Heater - 2 year Limited

***FIRESTONE RIDE-RITE AIR ASSIST SUSPENSION WARRANTY:**

- Air Springs – Limited Lifetime
- Bumpers, Hardware, Fittings & Air Line - 2 year



*The information shown is not a claim by Coachmen RV, a division of Forest River, Inc. and is for summary purposes only. Detailed and stated warranty information should be obtained through the individual manufacturer of said component.



SAFERIDE RV DIFFERENCE

- 12 million annual dispatches
- Largest contracted network
- Best on-time performance
- 6 redundant call centers
- 3,000 customer service agents
- Lowest claims severity in the marketplace
- 18 insurance companies
- Covering 27 auto manufacturing brands
- Competitive and affordable renewal pricing



UNLIMITED ROADSIDE ASSISTANCE BENEFITS

POWERED BY SAFERIDE MOTOR CLUB

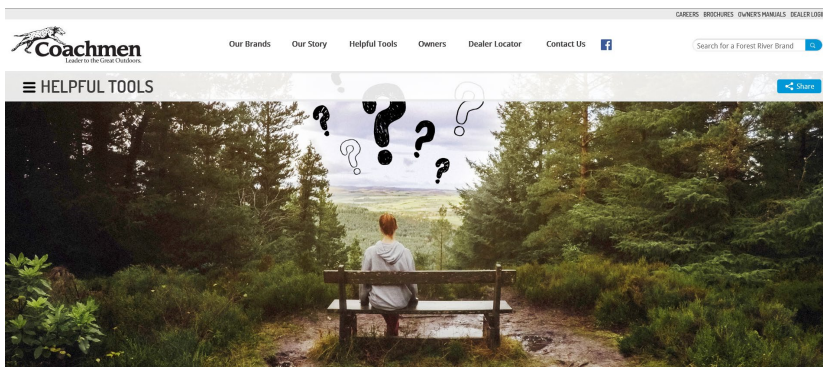
- Towing
- Winching
- Jump Starts
- Fluid Delivery
- Tire Changes
- Mobile Mechanic
- Lockout Assistance
- Technical Assistance
- Dealer Locator Service

VALID FOR 1 YEAR FROM DATE OF PURCHASE



FOR CUSTOMER SERVICE,
CALL 888-890-1745

WEBSITE HELPFUL TOOLS



OUR HELPFUL TOOLS ASSIST YOU BEFORE, DURING, AND AFTER YOU PURCHASE

- Answers to our most frequently asked questions
- Our RV Classifications, Commonly Used Terms And Weight Definitions
- RV Finder
- Towing Guidelines
- How-To Videos on most RV Systems and Maintenance Functions
- Payment Calculator

DIGITAL OWNER'S MANUAL

3 WAYS TO ACCESS YOUR OWNER'S MANUAL

- FREE MOBILE APP ON YOUR PHONE OR TABLET
- WEBSITE BASED MANUAL THROUGH YOUR BROWSER
- PDF DOWNLOAD FROM OUR WEBSITE



COACHMEN OWNER "DIGITAL KIT" APP

Now you can have your owner's manual with you wherever you are.
Download our free app from the app store or google play and
You'll have the information right at your fingertips

COACHMEN OWNER'S ASSOCIATION



COACHMEN IS PROUD TO SPONSOR ONE OF THE LARGEST MANUFACTURER SPONSORED CAMPING CLUBS IN NORTH AMERICA

Coachmen Owner's Association (COA) provides a broad breadth of value propositions for our owners including:

- Planned trips/tours and rallies at bulk rate discounts
- Free trip routing
- Free campground directory
- Free monthly email newsletters
- Mail forwarding
- Dedicated COA website
- Local and State club activities and Caravan Chapter membership opportunities
- Most importantly, COA enhances the Coachmen ownership and RV lifestyle experience. Every Coachmen RV owner is eligible for a FREE membership in the Coachmen Owner's Association.

Visit www.coachmenowners.com to learn more or to join the Coachmen Owner's Association.

CLASS “C” TOP SELLING FEATURES

	COACHMEN CLASS “C” FEATURE	COACHMEN ADVANTAGE
1	<u>SUPERIOR CONSTRUCTION:</u> <ul style="list-style-type: none"> ➤ CERTIFIED GREEN CONSTRUCTION ➤ AZDEL COMPOSITE SIDEWALLS ➤ CROSSFLEX ROOF MATERIAL ➤ QVM CERTIFIED 	<ul style="list-style-type: none"> ➤ Modern “Certified” construction practices, materials, and components. 100% aluminum cage constructed exterior for a lighter weight and better insulated box ➤ “Rot-Resistant” and “Delamination Resistant” construction for long life and higher re-sale value ➤ PVC roof material with a reinforced polyester mesh layer - Think Kevlar For Your Roof and ASTM-D751 tested https://seamancorp.wistia.com/medias/x78bo8g24f ➤ Coachmen RV is the only manufacturer in Elkhart that is a Ford QVM certified chassis modifier
2	<u>CAMPING ENHANCEMENTS:</u> <ul style="list-style-type: none"> ➤ FULL LENGTH PATIO AWNING & LED PATIO LIGHT BAR ➤ LP QUICK-CONNECT LINE ➤ SOLAR PORT CONNECTION ➤ WAREHOUSE STORAGE EXTERIOR COMPARTMENT 	<ul style="list-style-type: none"> ➤ Largest camp side patio areas in the industry with enhanced LED illumination ➤ Accessible camp-side LP quick connect for easy grilling ➤ Recharge the house battery(s) through the solar panel port ➤ Large, usable storage area with a Roto-Cast plastic floor that is from fitted, will not rust, and is easy to clean
3	<u>COMFORT:</u> <ul style="list-style-type: none"> ➤ RESIDENTIAL BED SIZES ➤ LARGE CAB-OVER AREA ➤ OVERSIZE DINETTES 	<ul style="list-style-type: none"> ➤ A true 60”x 80” Queen beds and 72”x 80” King beds ➤ 57”x 95” cab-over bunk providing room and comfort ➤ U-shape & J-lounge dinettes offer roomier seating and larger converted bed areas
4	<u>UPGRADED ELECTRONICS:</u> <ul style="list-style-type: none"> ➤ “RV” GRADE TV’S ➤ OMNI DIRECTIONAL ANTENNA ➤ BACK-UP CAMERA AND DASH MONITOR 	<ul style="list-style-type: none"> ➤ Large, high-definition Furrion LED TV’s hold-up in extreme environments with Climatesmart & Vibrationsmart technology ➤ Easy-To-Use Antenna does not crank up, and does not require the user to tune the antenna ➤ Large Rear View Monitor screen built into the convenient touch function in-dash radio
5	<u>ENHANCED MECHANICAL SYSTEMS:</u> <ul style="list-style-type: none"> ➤ LARGE FRESH WATER TANK ➤ EVEN-COOL DUCTING SYSTEM (on most models) ➤ 2nd ROOFTOP A/C PRE-WIRE (on select models) 	<ul style="list-style-type: none"> ➤ Industry Leading Fresh Water Capacity for extended dry-camping capability and supporting more occupants ➤ Superior cooling capability with insulated “Amico” ducting which is mold and condensation resistant ➤ Increased Cooling Capacity with an optional 2nd A/C unit

**LOOK
FOR THIS
LABEL!**



[PDF - FULL REPORT](#)



Resource Efficiency

Factors include: the use of sustainable materials, waste reduction, recycling and reuse of materials. Wasted or inefficient use of resources equals lost profits. Lean manufacturing and environmental management systems can produce customer satisfaction and improve the bottom line.



Indoor Environmental Quality

Being green also means strong attention to indoor air quality. Important factors include: ventilation, volatile organic compounds (VOC) content in carpet, hard flooring, adhesives, sealants, cabinets and insulation.



Operation and Maintenance

Green certification by TRA acknowledges that a green assembly is only truly green if the owners use the green features to their maximum effect. Manufacturers are encouraged to not only use green processes and materials but also to educate owners on their proper use of the structure.



Energy Efficiency

A positive energy strategy includes monitoring, design, construction and appliances. Renewable and clean sources of energy generated on or off-site, are important factors in the green process.



Water Efficiency

The major goal is the smart use of water. Water reduction is typically achieved through more efficient appliances and fixtures.



Innovative Practices

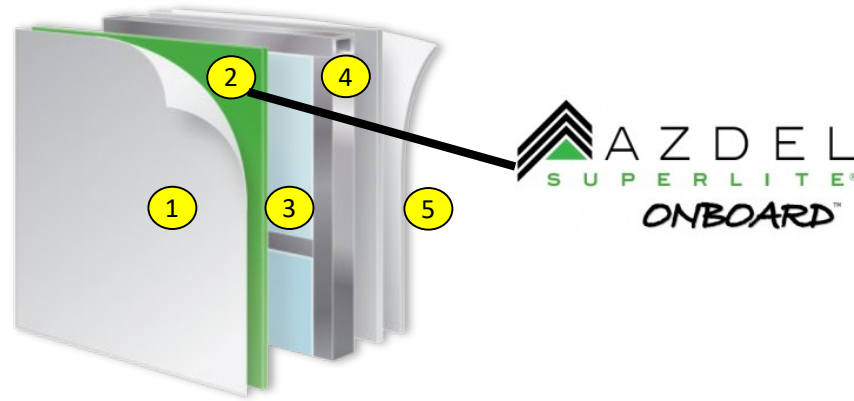
Manufacturers can achieve significantly higher TRA Certification ratings through new and innovative practices that increase green capability and performance.







“ROT-RESISTANT” ALUMINUM FRAMED CONSTRUCTION

2” THICK, DUAL LAMINATED (PINCH ROLL AND VACU-BOND) SIDEWALL CONSTRUCTION

1. High gloss fiberglass exterior skin
2. Azdel composite substrate
3. Hi-density foam insulation
4. Welded aluminum framing
5. Interior décor wallboard

Lamination Video: <https://youtu.be/FxKXlbf6Ncw>

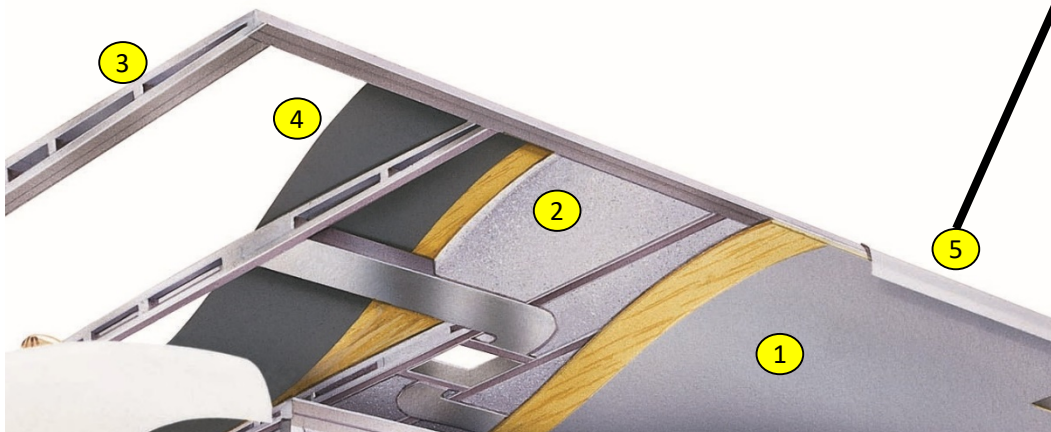


Azdel Composite Panels - Key Features					
Weight Matters™  50% Lighter Than Wood for Lighter RVs		Let It Rain™  Impervious to Water: No Rot, Mold or Water Damage		from Sweats to Chills™  3X the Insulation Value of Wood	
 Odorless, Formaldehyde Free		 Sound & Energy Absorbing for Quieter RVs		 Impact & Puncture Resistant: Stronger Sidewalls Help Prevent Damage	

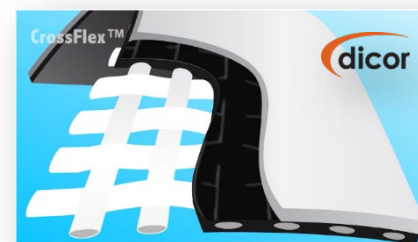
“ROT-RESISTANT” ALUMINUM FRAMED CONSTRUCTION

VACU-BOND LAMINATED ROOF CONSTRUCTION

1. Interior ceiling board
2. Hi-density foam insulation
3. Aluminum rafters
4. Roof decking – *Full walk-on roof*
5. CrossFlex roof material



CrossFlex



- 12 Year limited material warranty
- Industries 1st synthetic thermoplastic, nylon cross-webbing roof material
- ASTM D751 Tested, 8X stronger competitive products
- Top rated puncture and tear resistance
- Lightweight and flexible
- Exceptional sealant bonding performance
- UV Resistance, high solar reflectance
- Chemical resistant
- Minimal maintenance

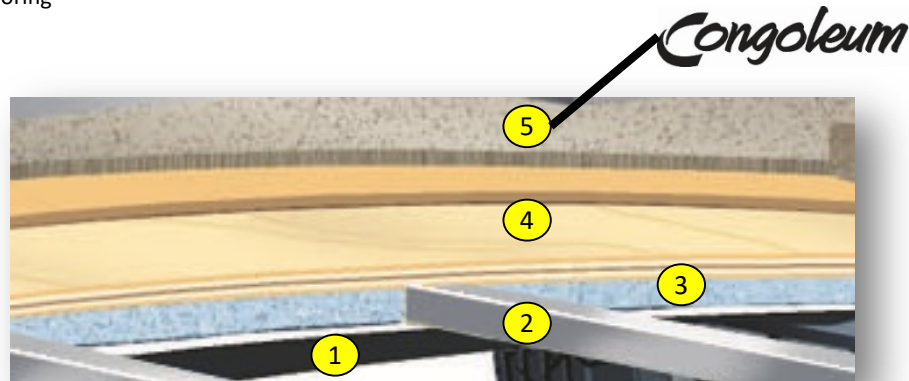
CrossFlex Testing Video:

<https://seamancorp.wistia.com/medias/x78bo8g24f>

“ROT-RESISTANT” ALUMINUM FRAMED CONSTRUCTION

VACU-BOND LAMINATED 2” FLOOR CONSTRUCTION

1. Galvanized steel underbelly – Durable, corrosion resistant
2. Aluminum framing – Strong, light weight
3. Hi-density foam insulation for MAX insulation R factor
4. Double layer floor decking which allows flex (1/2” total thickness)
5. Congoleum vinyl flooring





IN-HOUSE CHASSIS MODIFICATIONS

- QVM (Qualified, Vehicle Modifier) Certified
- Strick Quality Control
- OEM-matching harnesses, fittings and plugs are used whenever possible
- Driveline Modifications Follow Procedures & Guidelines Set by Dana Spicer, Ford & Other Chassis Manufacturers
- Added Frame Rail Sections are done with OEM grade Steel

Chassis Prep Video: https://youtu.be/Ntt2F_P2TPI

CAMPING ENHANCEMENTS



MAXIMUM LENGTH AWNINGS

- 12V Electric Powered
- Adjustable
- Wind Dampening Arms
- LED Light Strip

FURRION

Solar Power Port



WAREHOUSE STORAGE

- 60 – 100 cu. ft. of Space on Average
- Roto-Cast Polymer Floor
- Seamless Floor Bins with Drains
- Multiple Large Access Doors

LP Quick Connect

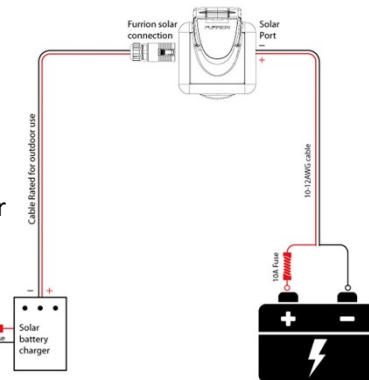
- Accessible camp-side LP quick connect for easy grilling



(Standard)



95 watt/ 10 AMP solar panel (sold separately)





OVERSIZE DINETTES

- Large U-shape & J-lounge Dinettes
- Roomier Seating
- Larger Converted Bed Areas



LARGE CAB-OVER BUNK

- Industry Leading, 57" x 95" cab-over bunk
- Durable Aluminum Framed Bunk Area
- Bunk Ladder Provided for Safety



RESIDENTIAL BEDS

- More Comfort
- 60" x 80" Queen Bed
- 72" x 80" King Bed (29KB/298KB)
- Deluxe Upgraded Mattresses are Available

FURRION

Televisions

High-definition on an ultra slim LED television, with enhanced audio features and a full spectrum of connectivity options:

- Steel mounting plate
- High brightness LED technology
- Vibrationsmart™ - designed for vibration resistance
- Climatesmart™ - tested for extreme climates

TV Testing Video: <https://youtu.be/pzylYzFAImM>



OMNI DIRECTIONAL ANTENNA

- TV/AM/FM antenna
- Fixed mount, no cracking up, automatic signal finding
- Superior signal strength



JRV4100

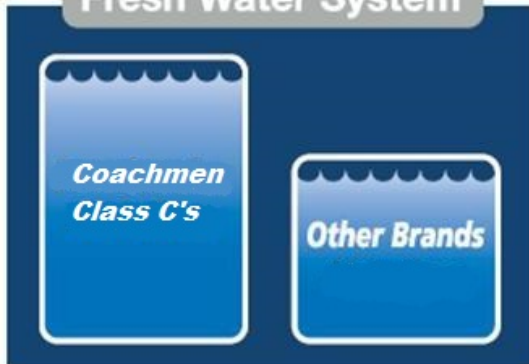


TOUCH SCREEN DASH RADIO WITH BACK-UP CAMERA

- 6.2" HD LCD touchscreen
- Back-up Camera
- 4 x 40 watt audio output
- Auto-trigger back-up monitor
- AM/FM/CD
- Bluetooth streaming, MP3 and WMA playback via USB, front auxiliary input
- iPod® & iPhone® control and charging via front USB
- 18 preset stations

ENHANCED MECHANICAL SYSTEMS

Fresh Water System



LARGER FRESH WATER CAPCITIES

- 20% More Fresh Water Capacity on Average Than Competitors
- Longer Dry-Camping Capability
- Ability to Service More Occupants
- Longer Time Spans Between Fill-ups
- Seamless Roto-Cast Polymer Tank

EVEN-COOL A/C DUCTING SYSTEM

(N/A 21RS/210RS, 22XG/220XG, 23FS/230FS)

- Moisture Resistant Foil Lining
- Mold Resistant Material
- Fewer Coil Freeze-ups
- Superior Airflow thru Radius Corners
- 13.5 BTU A/C (standard), 15.0 BTU A/C (optional)



DUAL A/C PRE-WIRE

(30BH/300BH Value Leaders and All Premier Units)

- Pre-wire Run in Ceiling, Standard
- Increased Cooling Capacity with an Optional 2nd A/C Unit
- Dual A/C Option: Ducted, 15.0 BTU A/C with Heat Pump in Living Room, 11.5 BTU Non-Ducted A/C in the Bedroom

▲ **Capacity** – DC compressor technology allows Norcold to provide 10-cu. ft. of storage in the same cutout as an 8-cu. ft. RV refrigerator

▲ **Residential Styling**

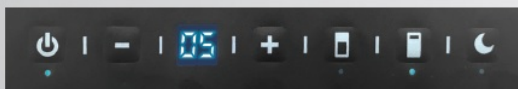
- Curved, reversible stainless doors
- Glass shelves and clear bins

▲ **Ready for the Road**

- Integrated door and travel latches with easy-open handles
- RV refrigerator-type condensation handling
- RV-standard mounting method for easy installation without add-on brackets
- Top control panel includes venting for improved refrigerator performance



▲ **Energy Efficient** – “Night Mode” reduces compressor and fan speed to conserve battery charge and reduce noise



NORCOLD – POLAR 10DC

(22XG/220XG, 23FS/230FS, 29KB/298KB)

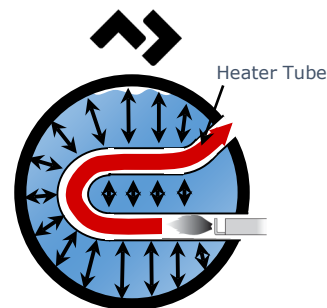
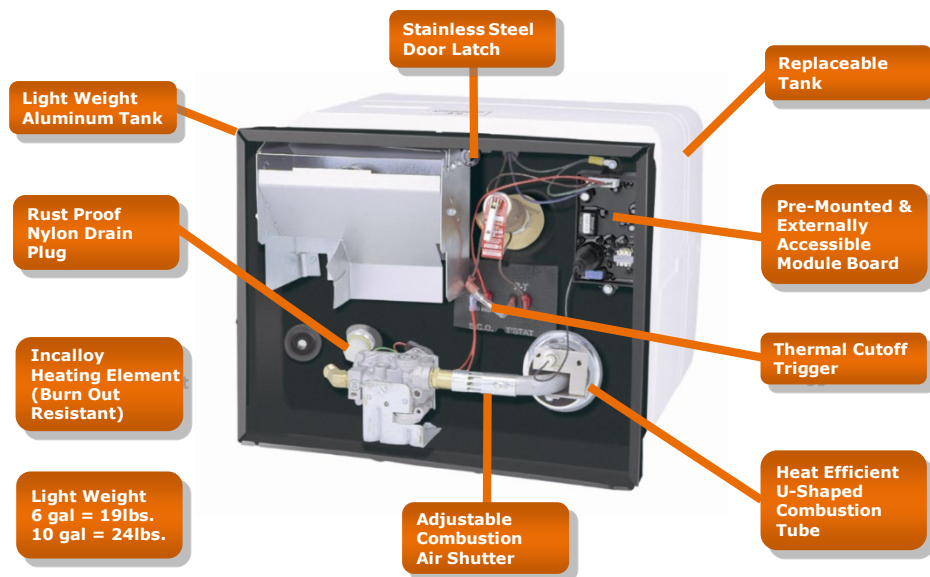
- Adjustable full/half shelf for storage flexibility
- Adjustable thermostat for adapting to changing conditions
- Separate temperature adjustments for fresh food and freezer sections
- Manual defrost extends battery charge
- Shelf retention to meet agency codes

(OPTIONAL) SWIVEL SEATS

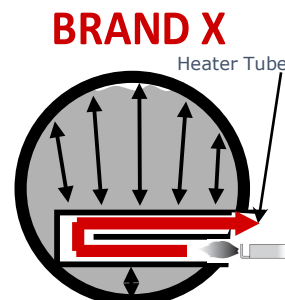


Available on Most Models

DOMETIC

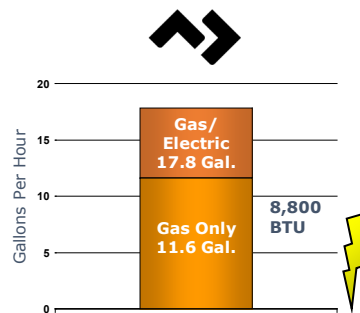


Heater (flue) tube circulates through the tank, effectively heating more water, faster



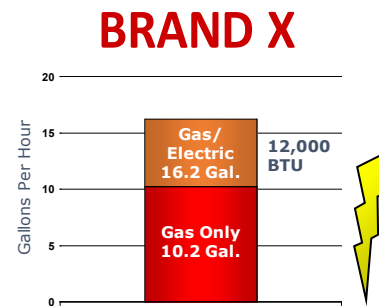
Heater (flue) tube only runs along the bottom of the tank, heating the water slowly and using more propane

6-GALLON COMPARISON



36% MORE EFFICIENT

- Lower BTU Input
- More Hot Water Per Hour



POOR EFFICIENCY

- Higher BTU Input
- Less Hot Water Per Hour

Hep_vO



HEPvO VALVE DRAIN LINES

- No Water Used
- Low Maintenance
- No Gases or Odor From Holding Tanks
- More sanitary than P-Traps

Video: <https://youtu.be/sgBjO-L9JJs>



PEX PLUMBING LINES

- Non-Toxic, superior water quality
- Requires fewer fittings reducing potential leaks
- Resists scale build-up
- Resistant to freeze-breakage
- No transfer of heat which conserves energy
- Water flows more quietly
- No "water hammer" noise

RV generator set
Quiet Gasoline™ Series
RV QG 4000



Cummins Onan

Performance you rely on.™



Features and benefits

- Microprocessor control with diagnostics.
- Exceptionally smooth, quiet operation.
- Sealed connectors.
- Full housing with enclosed muffler.
- 3-year limited warranty.
- Lightweight, compact.
- OHV engine for efficiency, no decarboning.

Average fuel consumption:

Gasoline
60 Hz 4.0 KY

No load
0.3 Gal/h (1.1 L/h)

Half load
0.5 Gal/h (1.8 L/h)

Full load
0.7 Gal/h (2.7 L/h)

Weight, size and sound level

Weight 172 lbs (83.4 kg)

Length 30.0 in (762 mm)

Width 19.7 in (500.4 mm)

Height 14.4 in (353.1 mm)

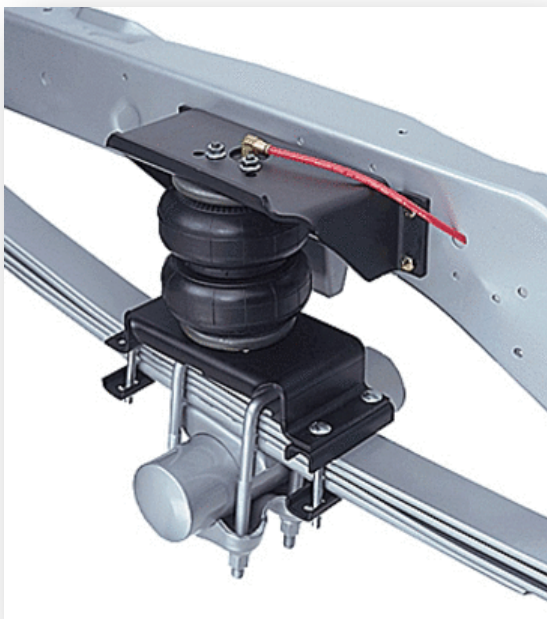
Sound 68 dB(A) Readings at 10 ft (3 m) half load

- Meets National Park Service sound level requirements (60 dB(A) @ 50 ft) for use in national parks.
- Typical installation will further reduce sound level.

Testing for RV application

- Tested at extremes of temperature -20° F (-29° C) to 120° F (49° C) for starting and operation
- Tested with RV loads, air conditioners, microwaves, converter, TVs, VCRs
- Tested installed; Cummins owned RVs used for product development testing
- Tested in high humidity conditions
- Tested in salt spray conditions
- Tested in heavy airborne dust conditions
- Field test program
- 60 Hz (120 V only) models listed by SGS United States Testing Company, Inc. per ANSI/RVIA EGS-1 and CSA-certified per Electrical Bulletin 946
- This generator set was designed and manufactured in facilities certified to ISO 9001
- 60 Hz models meet applicable U.S. EPA and California emissions standards





FIRESTONE RIDE-RITE AIR ASSIST SUSPENSION

- Improved Steering Control
- Individual Inflation Valves Allow for Side-to-Side Adjustment
- Reduces Suspension Fatigue
- Reduces Bottoming Out
- Increases Vehicle Stability
- Levels Vehicle Payload for Transport
- DO NOT EXCEED 100 PSI IN AIR BAG
- Available on Select Models (See www.coachmenrv.com for Details)
- 24 month/ 24,000 mile warranty

Equipped on 23FS/230FS and 30BH/300BH "Value Leaders" and all "Premier" Models

LEPRECHAUN By Coachmen

The Coachmen Leprechaun offers you the "Better Stuff" discerning RVers require.



LEPRECHAUN By Coachmen CHASSIS



FORD E350

- 12,500 lb. GVWR/ 5,000 lb. Towing Hitch
- 6.8L Triton® V10 Engine
- 305 Horsepower
- **420 lb-ft Torque**
- Six-speed TorqShift® Automatic with selectable tow/haul mode that compensates for altitude, grade & load conditions
- Chassis Warranty – 36 month/36,000 mile
- Drivetrain Warranty – 60 month/60,000 mile

FORD E450

- **14,500 lb. GVWR/ 7,500 lb. Towing Hitch**
- 6.8L Triton® V10 Engine
- 305 Horsepower
- **420 lb-ft Torque**
- Six-speed TorqShift® Automatic with selectable tow/haul mode that compensates for altitude, grade & load conditions
- Chassis Warranty – 36 month/36,000 mile
- Drivetrain Warranty – 60 month/60,000 mile



CHEVY EXPRESS 4500

- **14,200 lb. GVWR/ 5,000 lb. Towing Hitch**
- 6.0L Vortec® V8 Engine
- **341 Horsepower**
- 373 lb-ft Torque
- Six-speed Hydra-Matic® automatic transmission includes Tap-Up/Tap-Down Driver Shift Control & auto grade braking engine break
- Chassis Warranty – 36 month/36,000 mile
- Drivetrain Warranty – 60 month/60,000 mile

LEPRECHAUN PRODUCT CHANGES



ALL MODELS:

- Aluminum Framed Cab-over Bunk with Azdel
- Jensen Touch Screen Mechless Radio & Back-up Camera
- HDMI & USB Charging Station In Magazine Rack Above Entrance Door
- Interior Décors – Espresso (Dark), Carmel Drizzle (Light); Updated Wall Board, Flooring, Slideout Fascia, Countertops, Kitchen Backsplash
- Exterior LED Halo Tail Lights

VALUE LEADER MODELS:

- NEW Floor Plans:
220XG, 230FS, 300BH
- Discontinued Floor Plans:
210QB
- 32" Coach TV & DVD Now Standard
- Magic Chef 3-Burner Cooktop & Range Hood
- 10 cf., 12v Double Door Norcold Refrigerator (22XG, 23FS)
- Non-ducted A/C (210RS, 220XG, 230FS)
- 2nd A/C Pre-wire In Bedroom (300BH)
- Optional, Dual Low Profile A/C's: Non-ducted 11.5K BTU In Bedroom With Ducted 15K BTU In Living Room (300BH)
- Firestone Ride-rite Rear Air Assist Suspension (230FS, 300BH Only/ Mandatory)
- Curved Plastic Shower Door
- Fresh Water And City Water Combo Panel (No Black Tank Flush)
- Deleted Running Boards
- Deleted Oven
- Deleted Outside TV Compartment
- Deleted "Exterior Entertainment Center" Option
- Deleted "Camp Kitchen Table" Option
- Deleted Wi-Fi Ranger Option

PREMIER MODELS:

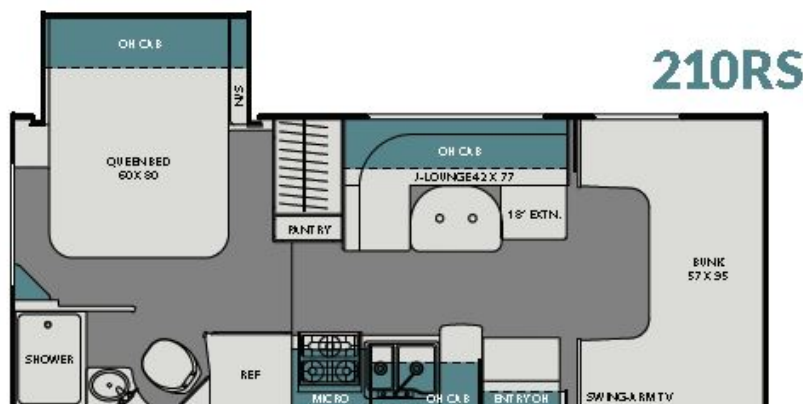
- NEW Floor Plans:
298KB
- Discontinued Floor Plans:
240FS, 280SS
- 39" TV, Wall Mount with DVD Player (298KB)
- Magic Chef 3-Burner Cooktop, Oven & Range Hood
- 10 cf., 12v Double Door Norcold Refrigerator (298KB)
- King Bed 72"x 80" (298KB)
- 2nd A/C Pre-wire In Bedroom (All Premier Models)
- Optional, Dual Low Profile A/C's: Non-ducted 11.5K BTU In Bedroom with Ducted 15K BTU In Living Room
- Electric Stabilizers (Mandatory On 298KB)

LEPRECHAUN
By Coachmen
VALUE LEADER MODELS



LEPRECHAUN By Coachmen

VALUE LEADER MODELS



FLOOR PLAN ADVANTAGES

- RESIDENTIAL 60" X 80" WALK AROUND QUEEN BED
- TWO LARGE BEDROOM WINDOWS
- LARGE DOUBLE DOOR WARDROBE
- MULTI-USE 5-IN-1 J-SOFA/DINETTE
- WAREHOUSE REAR STORAGE WITH LARGE ACCESS DOOR

MODEL	210 RS
CHASSIS	4500-CHEVY / 350-FORD
ENGINE	V8 - 6.0L / V10 - 6.8L
HORSE POWER	341 / 305
TORQUE (LBS per FT.)	373 / 420
WHEEL BASE	159" / 158"
GVWR (LBS.)	14,200 / 12,500
GCWR (LBS.)	20,000 / 18,500
UVW (APPROX. LBS.)*	9,890 / 9,830
CCC (APPROX. LBS.)*	4,310 / 2,670
GAWR FRONT (LBS.)	4,600 / 5,000
GAWR REAR (LBS.)	9,600 / 8,500
INTERIOR HEIGHT	6' 11"
EXTERIOR WIDTH	8' 4"
EXTERIOR HEIGHT (W/ A/C)	10' 11"
EXTERIOR LENGTH (W/ HITCH)	24' 9" / 24' 3"
HITCH WEIGHT (LBS.)	5,000
FUEL CAPACITY (GAL.)	57 / 55
LP CAPACITY (LBS.)	68
FRESH WATER CAPACITY (GAL.)	50
WATER HEATER CAPACITY (GAL.)	6
GREY TANK CAPACITY (GAL.)	28
BLACK TANK CAPACITY (GAL.)	31
EXTERIOR STORAGE (CU. FT.)	67
AWNING LENGTH (FT.)	15'

LEPRECHAUN By Coachmen

VALUE LEADER MODELS

220XG



FLOOR PLAN ADVANTAGES

- RESIDENTIAL 60" X 80" QUEEN MURPHY BED
- 3' X 5' REAR ENTRY DOOR
- MULTI-FUNCTION BEDROOM/CARGO BAY AREA
- 10 CU. FT., 12V REFRIGERATOR
- MULTI-USE 5-IN-1 J-SOFA/DINETTE

MODEL	220 XG
CHASSIS	4500-CHEVY / 350-FORD
ENGINE	V8 - 6.0L / V10 - 6.8L
HORSE POWER	341 / 305
TORQUE (LBS per FT.)	373 / 420
WHEEL BASE	159" / 158"
GVWR (LBS.)	14,200 / 12,500
GCWR (LBS.)	20,000 / 18,500
UVW (APPROX. LBS.)*	9,300 est. / 9,400 est
CCC (APPROX. LBS.)*	4,900 est. / 3,100 est.
GAWR FRONT (LBS.)	4,600 / 5,000
GAWR REAR (LBS.)	9,600 / 8,500
INTERIOR HEIGHT	6' 11"
EXTERIOR WIDTH	8' 4"
EXTERIOR HEIGHT (W/ A/C)	10' 11"
EXTERIOR LENGTH (W/ HITCH)	24' 9" / 24' 3"
HITCH WEIGHT (LBS.)	5,000
FUEL CAPACITY (GAL.)	57 / 55
LP CAPACITY (LBS.)	68
FRESH WATER CAPACITY (GAL.)	41
WATER HEATER CAPACITY (GAL.)	6
GREY TANK CAPACITY (GAL.)	28
BLACK TANK CAPACITY (GAL.)	31
EXTERIOR STORAGE (CU. FT.)	38
AWNING LENGTH (FT.)	15'

LEPRECHAUN By Coachmen

VALUE LEADER MODELS



MODEL	230 FS
CHASSIS	4500-CHEVY / 350-FORD
ENGINE	V8-6.0L / V10-6.8L
HORSE POWER	341 / 305
TORQUE (LBS per FT.)	373 / 420
WHEEL BASE	177" / 176"
GVWR (LBS.)	14,200 / 12,500
GCWR (LBS.)	20,000 / 18,500
UVW (APPROX. LBS.)*	10,750 est. / 10,800 est.
CCC (APPROX. LBS.)*	3,425 est. / 1,700 est.
GAWR FRONT (LBS.)	4,600 / 5,000
GAWR REAR (LBS.)	9,600 / 8,500
INTERIOR HEIGHT	6' 11"
EXTERIOR WIDTH	8' 4"
EXTERIOR HEIGHT (W/ A/C)	10' 11"
EXTERIOR LENGTH (W/ HITCH)	26' 6" / 26' 0"
HITCH WEIGHT (LBS.)	5,000
FUEL CAPACITY (GAL.)	57 / 55
LP CAPACITY (LBS.)	68
FRESH WATER CAPACITY (GAL.)	43
WATER HEATER CAPACITY (GAL.)	6
GREY TANK CAPACITY (GAL.)	31
BLACK TANK CAPACITY (GAL.)	31
EXTERIOR STORAGE (CU. FT.)	40
AWNING LENGTH (FT.)	17'

FLOOR PLAN ADVANTAGES

- RESIDENTIAL 60" X 80" NORTH/SOUTH FIXED QUEEN BED
- LARGE AND DEEP DOUBLE DOOR WARDROBE WITH THREE DRAWERS
- FULL WALL SLIDE INCLUDES WRAP AROUND DINETTE & BED
- WRAP AROUND DINETTE
- 10 CU. FT., 12V REFRIGERATOR

LEPRECHAUN By Coachmen

VALUE LEADER MODELS



FLOOR PLAN ADVANTAGES

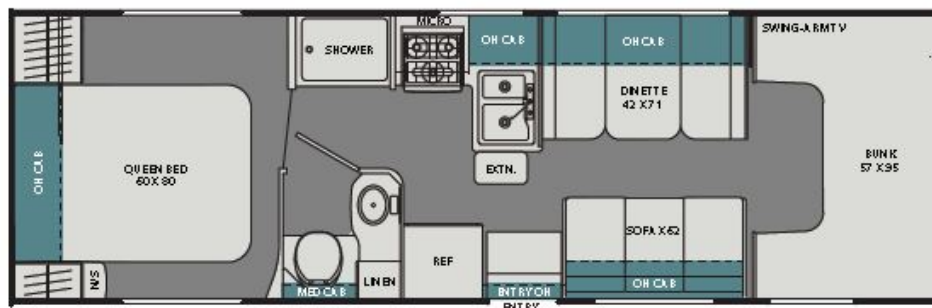
- RESIDENTIAL 60" X 80" WALK AROUND QUEEN BED
- TWO LARGE BEDROOM WINDOWS
- LARGE DOUBLE DOOR WARDROBE
- MULTI-USE 5-IN-1 J-SOFA/DINETTE ACROSS FROM SOFA
- WAREHOUSE REAR STORAGE WITH LARGE ACCESS DOOR

MODEL	260 RS
CHASSIS	4500-CHEVY / 350-FORD
ENGINE	V8 - 6.0L / V10 - 6.8L
HORSE POWER	341 / 305
TORQUE (LBS per FT.)	373 / 420
WHEEL BASE	191" / 190"
GVWR (LBS.)	14,200 / 12,500
GCWR (LBS.)	20,000 / 18,500
UVW (APPROX. LBS.)*	10,470 / 10,390
CCC (APPROX. LBS.)*	3,730 / 2,110
GAWR FRONT (LBS.)	4,600 / 5,000
GAWR REAR (LBS.)	9,600 / 8,500
INTERIOR HEIGHT	6' 11"
EXTERIOR WIDTH	8' 4"
EXTERIOR HEIGHT (W/ A/C)	10' 11"
EXTERIOR LENGTH (W/ HITCH)	27' 11" / 27' 5"
HITCH WEIGHT (LBS.)	5,000
FUEL CAPACITY (GAL.)	57 / 55
LP CAPACITY (LBS.)	68
FRESH WATER CAPACITY (GAL.)	50
WATER HEATER CAPACITY (GAL.)	6
GREY TANK CAPACITY (GAL.)	31
BLACK TANK CAPACITY (GAL.)	31
EXTERIOR STORAGE (CU. FT.)	60
AWNING LENGTH (FT.)	18'

LEPRECHAUN By Coachmen

VALUE LEADER MODELS

270QB



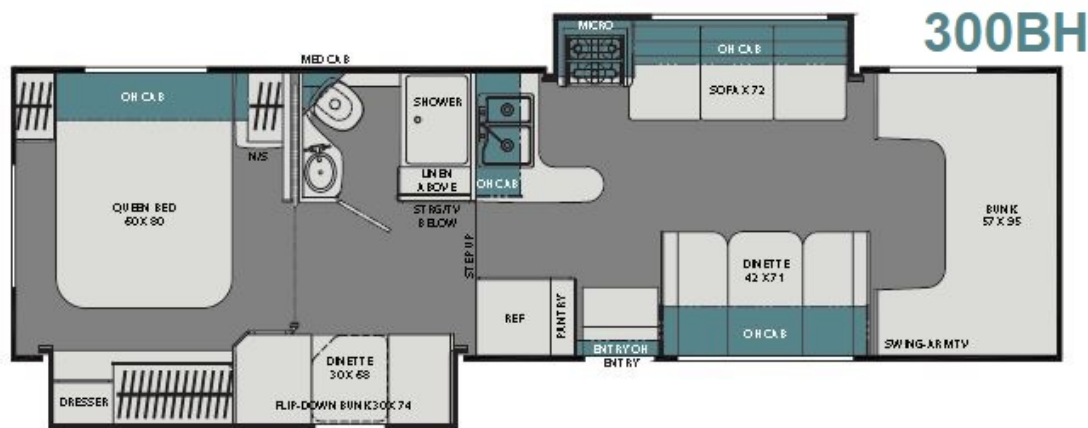
FLOOR PLAN ADVANTAGES

- RESIDENTIAL 60" X 80" WALK AROUND QUEEN BED
- SPLIT BATH
- 90 DEGREE KITCHEN DESIGN WITH AMPLE COUNTERTOP SPACE
- OPPOSING SOFA AND DINETTE
- WAREHOUSE REAR STORAGE WITH LARGE ACCESS DOORS

MODEL	270 QB
CHASSIS	4500-CHEVY / 350-FORD
ENGINE	V8 - 6.0L / V10 - 6.8L
HORSE POWER	341 / 305
TORQUE (LBS per FT.)	373 / 420
WHEEL BASE	191" / 190"
GVWR (LBS.)	14,200 / 12,500
GCWR (LBS.)	20,000 / 18,500
UVW (APPROX. LBS.)*	10,316 / 10,294
CCC (APPROX. LBS.)*	3,884 / 2,206
GAWR FRONT (LBS.)	4,600 / 5,000
GAWR REAR (LBS.)	9,600 / 8,500
INTERIOR HEIGHT	6' 11"
EXTERIOR WIDTH	8' 4"
EXTERIOR HEIGHT (W/ A/C)	10' 11"
EXTERIOR LENGTH (W/ HITCH)	30' 0" / 29' 6"
HITCH WEIGHT (LBS.)	5,000
FUEL CAPACITY (GAL.)	57 / 55
LP CAPACITY (LBS.)	68
FRESH WATER CAPACITY (GAL.)	40
WATER HEATER CAPACITY (GAL.)	6
GREY TANK CAPACITY (GAL.)	31
BLACK TANK CAPACITY (GAL.)	31
EXTERIOR STORAGE (CU. FT.)	77
AWNING LENGTH (FT.)	20'

LEPRECHAUN By Coachmen

VALUE LEADER MODELS



FLOOR PLAN ADVANTAGES

- RESIDENTIAL 60" X 80" WALK AROUND QUEEN BED
- ALL-IN-ONE BATHROOM
- BUNK AREA 30" X 68" DINETTE CONVERTS INTO TWO 30" X 74" BUNK BEDS
- WRAP AROUND KITCHEN DESIGN
- OPPOSING SOFA AND DINETTE

MODEL	300 BH
CHASSIS	450-FORD
ENGINE	V10 - 6.8L
HORSE POWER	305
TORQUE (LBS per FT.)	420
WHEEL BASE	223"
GVWR (LBS.)	14,500
GCWR (LBS.)	22,000
UVW (APPROX. LBS.)*	12,500 est.
CCC (APPROX. LBS.)*	2,000 est.
GAWR FRONT (LBS.)	5,000
GAWR REAR (LBS.)	9,600
INTERIOR HEIGHT	6' 11"
EXTERIOR WIDTH	8' 4"
EXTERIOR HEIGHT (W/ A/C)	10' 11"
EXTERIOR LENGTH (W/ HITCH)	32' 11"
HITCH WEIGHT (LBS.)	7,500
FUEL CAPACITY (GAL.)	55
LP CAPACITY (LBS.)	68
FRESH WATER CAPACITY (GAL.)	50
WATER HEATER CAPACITY (GAL.)	6
GREY TANK CAPACITY (GAL.)	34
BLACK TANK CAPACITY (GAL.)	29
EXTERIOR STORAGE (CU. FT.)	77
AWNING LENGTH (FT.)	11'

LEPRECHAUN
By Coachmen
PREMIER MODELS



LEPRECHAUN By Coachmen PREMIER MODELS

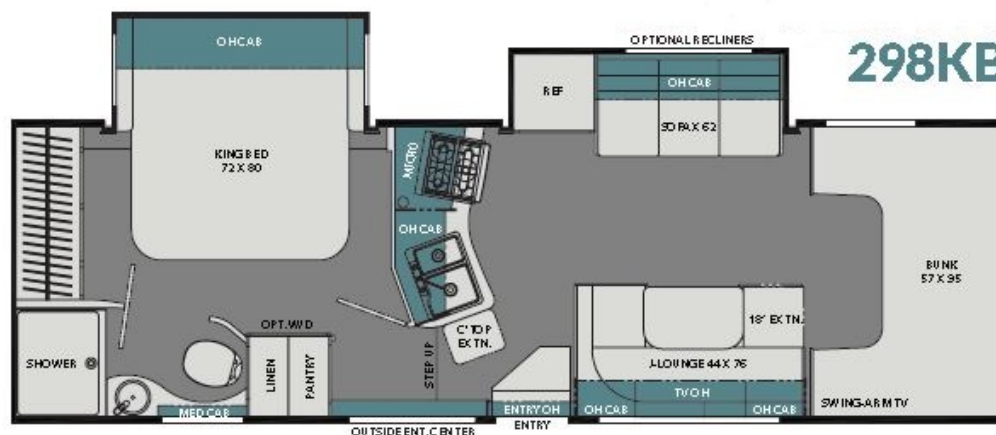


FLOOR PLAN ADVANTAGES

- RESIDENTIAL 60" X 80" WALK AROUND QUEEN BED
- PULL-OUT BATHROOM VANITY SHELF
- WRAP AROUND KITCHEN DESIGN
- MULTI-USE 5-IN-1 J-SOFA/DINETTE ACROSS FROM SOFA
- LARGE DOUBLE DOOR WARDROBE

MODEL	260 DS
CHASSIS	4500 CHEVY/ 450-FORD
ENGINE	V8-6.0L / V10-6.8L
HORSE POWER	341 / 305
TORQUE (LBS per FT.)	373 / 420
WHEEL BASE	191" / 190"
GVWR (LBS.)	14,200/ 14,500
GCWR (LBS.)	20,000 / 22,000
UVW (APPROX. LBS.)*	11,160 / 11,460
CCC (APPROX. LBS.)*	3,040 / 3,040
GAWR FRONT (LBS.)	4,600 / 5,000
GAWR REAR (LBS.)	9,600
INTERIOR HEIGHT	6' 11"
EXTERIOR WIDTH	8' 4"
EXTERIOR HEIGHT (W/ A/C)	10' 11"
EXTERIOR LENGTH (W/ HITCH)	27' 11" / 27' 5"
HITCH WEIGHT (LBS.)	5,000 / 7,500
FUEL CAPACITY (GAL.)	57 / 55
LP CAPACITY (LBS.)	68
FRESH WATER CAPACITY (GAL.)	50
WATER HEATER CAPACITY (GAL.)	6
GREY TANK CAPACITY (GAL.)	31
BLACK TANK CAPACITY (GAL.)	31
EXTERIOR STORAGE (CU. FT.)	60
AWNING LENGTH (FT.)	18'

LEPRECHAUN By Coachmen PREMIER MODELS



FLOOR PLAN ADVANTAGES

- BIGGER: RESIDENTIAL 72" X 80" WALK AROUND KING BED
- BIGGER: BEDROOM WARDROBE WITH DOUBLE DOORS
- BIGGER: BATHROOM DESIGN WITH 30" X 36" SHOWER
- WASHER/DRYER PREP
- 10 CU. FT., 12V REFRIGERATOR

MODEL	298 KB
CHASSIS	450-FORD
ENGINE	V10 - 6.8L
HORSE POWER	305
TORQUE (LBS per FT.)	420
WHEEL BASE	202"
GVWR (LBS.)	14,500
GCWR (LBS.)	22,000
UVW (APPROX. LBS.)*	12,400 est.
CCC (APPROX. LBS.)*	2,100 est.
GAWR FRONT (LBS.)	5,000
GAWR REAR (LBS.)	9,600
INTERIOR HEIGHT	6' 11"
EXTERIOR WIDTH	8' 4"
EXTERIOR HEIGHT (W/ A/C)	10' 11"
EXTERIOR LENGTH (W/ HITCH)	30' 5"
HITCH WEIGHT (LBS.)	7,500
FUEL CAPACITY (GAL.)	55
LP CAPACITY (LBS.)	68
FRESH WATER CAPACITY (GAL.)	48
WATER HEATER CAPACITY (GAL.)	6
GREY TANK CAPACITY (GAL.)	34
BLACK TANK CAPACITY (GAL.)	31
EXTERIOR STORAGE (CU. FT.)	80
AWNING LENGTH (FT.)	21'

LEPRECHAUN By Coachmen PREMIER MODELS

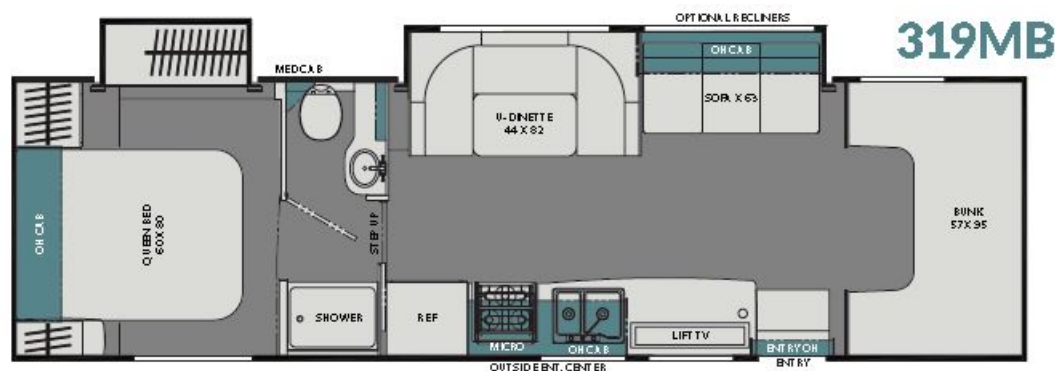


MODEL	311 FS
CHASSIS	450-FORD
ENGINE	V10 - 6.8L
HORSE POWER	305
TORQUE (LBS per FT.)	420
WHEEL BASE	220"
GVWR (LBS.)	14,500
GCWR (LBS.)	22,000
UVW (APPROX. LBS.)*	12,370
CCC (APPROX. LBS.)*	2,130
GAWR FRONT (LBS.)	5,000
GAWR REAR (LBS.)	9,600
INTERIOR HEIGHT	6' 11"
EXTERIOR WIDTH	8' 4"
EXTERIOR HEIGHT (W/ A/C)	10' 11"
EXTERIOR LENGTH (W/ HITCH)	31' 10"
HITCH WEIGHT (LBS.)	7,500
FUEL CAPACITY (GAL.)	55
LP CAPACITY (LBS.)	68
FRESH WATER CAPACITY (GAL.)	50
WATER HEATER CAPACITY (GAL.)	6
GREY TANK CAPACITY (GAL.)	32
BLACK TANK CAPACITY (GAL.)	31
EXTERIOR STORAGE (CU. FT.)	70
AWNING LENGTH (FT.)	19'

FLOOR PLAN ADVANTAGES

- RESIDENTIAL 60" X 80" WALK AROUND QUEEN BED
- BEDROOM WALK-IN CLOSET
- JACK & JILL BATHROOM WITH WASHER/DRYER PREP
- LARGE FLOOR TO CEILING PANTRY WITH FIVE PULL OUT SHELVES
- RESIDENTIAL REFRIGERATOR WITH CRISPER DRAWER AND BOTTOM FREEZER

LEPRECHAUN By Coachmen PREMIER MODELS



MODEL	319 MB
CHASSIS	450-FORD
ENGINE	V10 - 6.8L
HORSE POWER	305
TORQUE (LBS per FT.)	420
WHEEL BASE	223"
GVWR (LBS.)	14,500
GCWR (LBS.)	22,000
UVW (APPROX. LBS.)*	11,680
CCC (APPROX. LBS.)*	2,820
GAWR FRONT (LBS.)	5,000
GAWR REAR (LBS.)	9,600
INTERIOR HEIGHT	6' 11"
EXTERIOR WIDTH	8' 4"
EXTERIOR HEIGHT (W/ A/C)	10' 11"
EXTERIOR LENGTH (W/ HITCH)	32' 11"
HITCH WEIGHT (LBS.)	7,500
FUEL CAPACITY (GAL.)	55
LP CAPACITY (LBS.)	68
FRESH WATER CAPACITY (GAL.)	50
WATER HEATER CAPACITY (GAL.)	6
GREY TANK CAPACITY (GAL.)	32
BLACK TANK CAPACITY (GAL.)	29
EXTERIOR STORAGE (CU. FT.)	100
AWNING LENGTH (FT.)	21'

FLOOR PLAN ADVANTAGES

- RESIDENTIAL 60" X 80" WALK AROUND QUEEN BED
- EXTRA LONG KITCHEN COUNTER TOP DESIGN
- 39" TV ON A MOTORIZED TELEAVATOR LOCATED IN KITCHEN COUNTER TOP
- SLIDEOUTS ARE LOCATED ON THE OFF-CAMP SIDE OF MOTOR HOME
- OVERSIZE 44" X 82" U-DINETTE

LEPRECHAUN PREMIER KEY UPGRADES

(OPTIONAL)

COMFORT & CONVENIENCE PACKAGE

- CarPlay Touch Screen Radio & Backup Monitor
- Convection Microwave
- Upgraded Mattress
- 6 Gal Gas & Electric Water Heater
- Heated Side Mirrors with Remote
- Fiberglass Running Boards
- Leatherette Seat Covers
- Cab Over & Bedroom Power Vent with MaxxAir Covers
- Dual Auxiliary Coach Batteries
- Slide Out Awning Toppers

///ADVENT®

MODEL: ADVUNI400CP

CarPlay DASH RADIO W/ BACK-UP CAMERA







- High gloss touch screen
- Bluetooth
- USB Apple CarPlay
- AM-FM Radio with NOAA Weather Band and RDS
- Wi-Fi, iPod and A/V input4M
- Bluetooth PTT (Android / Apple Voice Search)
- RGB Front Panel Illumination
- 2.1 Amp Charging
- Front Aux In and USB Port (Full Size)
- SWC Interface - Compatible with PAC standard
- IR Remote Control
- Programmable Turn-On Volume
- HDMI / MHL Connectivity
- 3-Year Warranty

LEPRECHAUN PREMIER KEY UPGRADES

WIFIRANGER

-  **Boosted Wi-Fi**
FIND 4-10X WIFI NETWORKS
-  **Automated Failover**
RECONNECTS AFTER GOING OFFLINE
-  **Interconnect Everything**
HOOK UP ALL YOUR FAVORITE DEVICES



-  **One-time Login**
SAVE TIME AND SIMPLIFY CHANGING LOCATIONS
-  **Bandwidth Management**
KEEP TABS ON USERS AND CONTROL DATA LIMITS
-  **Robust Security**
SECURE WI-FI AND SAFE BROWSING MODE
-  **Simple Interface**
ENOUGH OF THOSE CONFUSING PRODUCTS

Video: <https://youtu.be/c1pbyoXfd7I>



EXTERIOR TV PREP COMPARTMENT

- Standard Exterior TV Prep with 110v Outlet and Coaxial Hook-up
- Optional TV with Bluetooth/AM/FM Sound Bar Speaker, and HDMI Port



COACHMEN "WATER WORKS" COMPARTMENT

- Black Tank Flush
- Easy Winterization
- Exterior Water Pump Switch
- Single Hose Inlet

LEPRECHAUN PREMIER KEY UPGRADES

(OPTIONAL)

MOLDED FIBERGLASS CAP WITH WINDOW

- Sleek Styling
- Windshield Grade Cabover Window
- Molded Fiberglass Interior Cap
- Exterior LED Accent Lighting



(OPTIONAL)

BIGFOOT AUTO LEVELING SYSTEM

- Simple, one touch operation for fully automatic leveling.
- A single Central Hydraulic Pump.
- All-Up safety feature signals if one or more of the cylinders are not fully retracted before you drive off.
- Manual adjustment feature that allows you to operate each cylinder individually.
- Four powder coated cylinders rated to lift 8,000 pounds per cylinder and come with a LIFETIME CYLINDER WARRANTY.



LEPRECHAUN PREMIER KEY UPGRADES

OPTIONAL EXTERIOR PAINT CHOICES



(OPTIONAL) COFFEE - FULL AUTOMOTIVE PAINT



(OPTIONAL) WINE - FULL AUTOMOTIVE PAINT



(OPTIONAL) PARTCIAL BODY PAINT



(OPTIONAL) PAINTED CHASSIS CAB

LEPRECHAUN “VALUE LEADER” vs “PREMIER” MODELS

Leprechaun - Value Leader Package	Leprechaun - Premier Package
Floor Plan Line-up (21RS, 22XG, 23FS, 26RS, 27QB, 30BH)	Floor Plan Line-up (26DS, 29KB, 31FS, 31MB, 32DS)
3 Burner Cooktop	3 Burner Cooktop with Oven
5/8" 1-Piece Kitchen Countertops	1" Drop Edge 1-Piece Kitchen Countertops
Curved Vinyl Shower Door	Glass Shower Door
2nd A/C Prep in Bedroom (30BH only)	2nd A/C Prep in Bedroom (All Models)
Top Mount Kitchen Sink	Under Mount Kitchen Sink
Satin Nickel Kitchen Faucet	Satin Nickel Kitchen Faucet with Spray
Air Assist (23FS, 30BH only - Mandatory)	Air Assist (Mandatory on All Models)
Fresh Water and City Water Combo Panel	Water Works Panel with Easy Winterization and Black Tank Flush
Exterior Safety Grab Handle	Lit Acrylic Exterior Safety Grab Handle
N/A	Rear Roof Ladder
N/A	Metal Running Boards
N/A	Wi-Fi Ranger
N/A	Pop-up Kitchen Recept "Power Tower"
N/A	Exterior Shower
N/A	Easy Access Termination Center Trunk Door
N/A	Upgraded Faucets & Shower Head
N/A	Rear Storage Compartment Trunk Light
N/A	Carbon Fiber Dash Appliqué
Option equipment Differences	
Dual A/C - 15K BTU Front & 11.5K BTU Rear (30BH only)	Dual A/C-15K BTU Front & 11.5K BTU Rear
N/A	Comfort and Convenience Package
N/A	- Upgraded Car Play Dash Radio
N/A	- Convection Microwave
N/A	- 6 Gal Gas & Electric Water Heater
N/A	- Heated Side Mirrors with Remote
N/A	- Fiberglass Running Boards
N/A	- Leatherette Seat Covers
N/A	- Cab Over & Bedroom Power Vent Fan w/ MaxxAir Covers
N/A	- Dual Auxiliary Coach Batteries
N/A	Dual Recliners
N/A	Cockpit Folding Table
N/A	Electric Fireplace (319MB only)
N/A	Side by Side Refrigerator (260DS only)
N/A	Washer/ Dryer Combo (298KB, 311FS, 320DS)
N/A	Solid Surface Kitchen Countertops w/ SS sink
N/A	Exterior Camp Kitchen (319MB)
N/A	Camping Cozy Package
N/A	Sideview Cameras
N/A	Heated Holding Tank Pads
N/A	Spare Tire
N/A	Aluminum Rims
N/A	Equalizer Stabilizer Jacks (Mandatory 298KB, 311FS)
N/A	Hydraulic Leveling Jacks
N/A	Molded Fiberglass Front Cap with Window
N/A	Bedroom TV and DVD Player
N/A	Exterior Entertainment Center with Bluetooth Soundbar
N/A	Tailgater Satellite Dome & Receiver

FREELANDER vs. LEPRECHAUN "VALUE LEADER" MODELS

Freelander - Value Leader Package	Leprechaun- Value Leader Package
Low-Gloss White Fiberglass Sidewalls	Hi-Gloss Color Infused Fiberglass Sidewalls
Luna Interior Cabinetry	Hi-Gloss Maple Interior Cabinetry
Freelander Interior Décor	Leprechaun Interior Décor

FREELANDER vs. LEPRECHAUN “PREMIER” MODELS

Freelander - Premier Package	Leprechaun - Premier Package
Low-Gloss White Fiberglass Sidewalls	Hi-Gloss Color Infused Fiberglass Sidewalls
Molded Fiberglass Front Wrap	Molded Fiberglass Front Wrap w/ LED Accent Lights
Luna Interior Cabinetry	Hi-Gloss Maple Interior Cabinetry
Freelander Interior Décor	Leprechaun Interior Décor
Top Mount Kitchen Sink	Under Mount Kitchen Sink
Hi-Rise Kitchen Faucet	Kitchen Faucet with pull-out Sprayer
Window at Bed	Headboard at Bed
N/A	Ext Shower
N/A	Upgraded Faucets & Shower Head
N/A	Rear Storage Compartment Trunk Light
Option equipment Differences	
Molded Fiberglass Front Cap	Molded Fiberglass Front Cap with Window
Bedroom TV Prep Only	Bedroom TV and DVD Player
Std. Washer/Dryer Prep only (29KB, 31FS, 32DS)	Washer/ Dryer Combo (298KB, 311FS, 320DS)
Upgraded Poly-Mold Kitchen Countertop w/ Spray Faucet	Solid Surface Kitchen Countertops w/ SS sink
N/A	Comfort and Convenience Package
N/A	- Convection Microwave
N/A	- 6 Gal Gas & Electric Water Heater
N/A	- Heated Side Mirrors with Remote
N/A	- Fiberglass Running Boards
N/A	- Leatherette Seat Covers
N/A	- Dual Auxiliary Coach Batteries
N/A	Electric Fireplace (319MB only)
N/A	Side by Side Refrigerator (260DS only)
N/A	Exterior Camp Kitchen (319MB)
N/A	Aluminum Rims
N/A	Hydraulic Leveling Jacks
N/A	Tailgater Satellite Dome & Receiver