

MIRADA
Select
BY COACHMEN

MIRADA
Select
BY COACHMEN

CONSIDER THIS
YOUR DECLARATION
OF INDEPENDENCE.



 **Coachmen**
Leader to the Great Outdoors.



Exterior Color Selections



Porcelain



Auburn



Twilight

With three full-body paint options to choose from, Mirada Select boasts an elegant appearance and a refined sense of style.



NOBODY CALLS IT THE “PRETTY OKAY OUTDOORS.”

So why settle for a “pretty okay motorhome?” You shouldn’t. But that doesn’t mean you have to drain your bank account. Because the Mirada Select offers the look, feel, and drivability of a premium diesel machine—all without the diesel price tag. What’s more, the gas-powered Mirada Select is built for the long haul. Constructed with a fiberglass roof and featuring aluminum slam latch doors, 22.5” wheels with aluminum rims, and stackable washer/dryer prep (only in 37SA and 37LS), it’s an unbeatable combination of power, luxury, and livability.

The new Mirada Select is the envy of travelers everywhere, and it’s easy to see why—no vehicle offers a better blend of style and safety:

- Upgraded, power-heated exterior chrome mirrors fight frost and keep your line of sight open, no matter the weather conditions.
- Side cameras with a color monitor help eliminate your blind spots.
- The Mirada Select’s frameless tinted dual-pane windows fight sun glare and improve your driving experience.
- High-gloss exterior walls are attractive and easy to keep clean.
- The full basement with pass-through storage makes it easy to transport your luggage and belongings.
- Halogen projection headlights with LED u-bar and LED foglights provide better visibility and a sleeker look.
- A 32” TV with DVD player will keep you entertained on and off the road.
- The KING Jack TV antenna means clearer reception in more places.



EVERY ADVENTURER NEEDS A BASE CAMP.

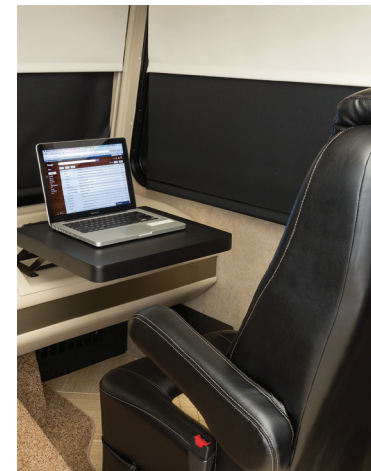
A long day exploring and enjoying the great outdoors can wear a traveler out. That's why, when you're indoors, you deserve to relax. The Mirada Select offers a spacious interior, complete with all the comforts of home, to let you do just that.

The interior of the Mirada Select is engineered for maximum comfort. Spacious and stacked with amenities, it has everything you need to relax and recharge. That includes a stainless steel appliance package, Bluetooth radio, a 40-inch TV, an upgraded tile floor, and more standard features than ever before.

*Mirada Select 37LS with Black Onyx décor and Spiced Maple cabinets shown in all photos.

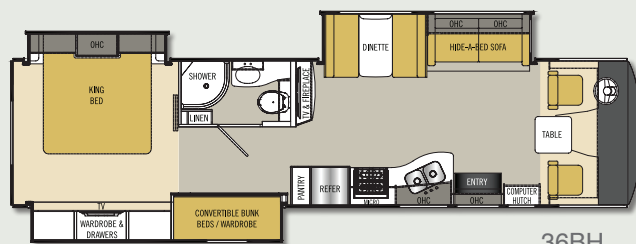
A number of excellent features now come standard on the Mirada Select, including:

- A new, optional salon bunk (37LS) accommodates up to 600 pounds and conserves space (pictured above). When not in use this bunk can be conveniently hidden from sight.
- Unique and colorful backlit glass tile entertainment center.
- Energy-efficient lighting, courtesy of LED interior ceiling lights.
- An attractive and sturdy solid surface countertop for the galley, complete with stainless steel appliances throughout.
- A 6-way power driver seat to ensure a comfortable driving experience.
- Easy-to-clean snap-stone porcelain tile floor for a seamless, integrated look.

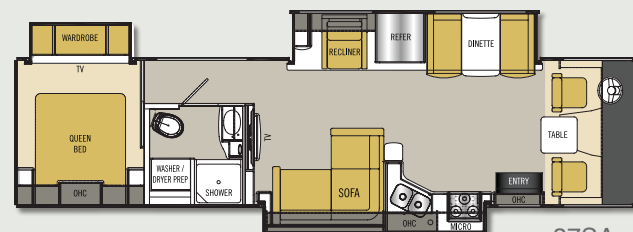


Enjoy more standard upgrades than ever, including:

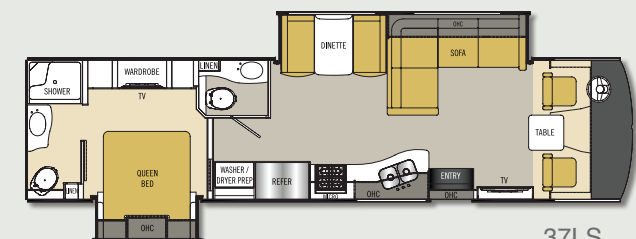
- Enjoy a good night's sleep, courtesy of an upgraded Serta pillow-top mattress and a cozy bedspread.
- The 1500-watt electric fireplace with thermostat up to 82°F will keep you warm and cozy on cold mornings.
- Enjoy a luxurious showering experience in our fiberglass shower, complete with glass shower door and skylight.
- The multi-colored glass tile behind the TV adds an elegance not available in competing models.
- The passenger seat computer workstation includes USB, 12-volt, and 110 power sources.
- Select from a variety of color schemes and interior wood options to create a look you'll love.



36BH



37SA



37LS

STANDARD FEATURES

INTERIOR APPOINTMENTS

Padded Vinyl Ceiling
Bismark Fawn Wall Board – Coach
Glo Pecan Wall Board – Accent
Upgraded Tile Floor
Satin Nickel Hardware
Raised Panel Hardwood Cab Doors
Frameless Tinted Dual-Pane Windows
Reclining/Swivel Passenger Seat
6-Way Power Driver's Seat
Visionary Sofa Hide-A-Bed
Dream Dinette
Solar Privacy Shades Throughout
Ent./Computer Hutch (36BH)
Ball-Bearing Drawer Guides Throughout

INTERIOR EQUIPMENT

Radio AM/FM/CD w/Bluetooth
Cable TV Jack
LP Leak Alarm and Smoke Detector
Carbon Monoxide Detector
Fire Extinguisher
KING Jack TV Antenna
40" LCD TV Coach & DVD Player (36BH & 37LS)
42" LCD TV Coach & DVD Player (37SA)
Satellite Prep Wire to Roof
Electric Fireplace
Home Theater w/Subwoofer
TV/DVD Player for Each Bunk (36 BH Only)

GALLEY

Solid Surface Countertop
Single-Lever High Kitchen Faucet w/Sprayer
Stainless Steel Double-Bowl Kitchen Sink
Stainless Steel Appliance Package w/Convection
Microwave & Cooktop

3-Speed Fantastic Power Fan
Solid Surface Range & Sink Cover
Glass Tile Backsplash
Pop-up Recept. w/USB Ports

BATH AND WATER

Porcelain Toilet w/Foot Flush & Sprayer
Fiberglass Shower
Glass Shower Door
Power Bath Vent
10-Gallon Gas/Elec – E.I. Water Heater
Demand Water Pump
Skylight Over Shower
Whole Coach Water Filter (EXC. CSA)
Stackable Washer/Dryer Prep (37SA & 37LS)

SLEEPING

King Bed 72"x80" (36BH)
Queen Bed 60"x74" (37SA & 37LS)
Bunk Beds (36BH Only) W/ Privacy Drapes
Upgraded Mattress
Bedspread
32" LCD TV Bedroom & DVD player
Designer Headboard (N/A 37LS)

ELECTRICAL/HEATING/AC

LED Interior Ceiling Lighting
30' 50-Amp Power Cord
55-Amp, 110/12-Volt Power Converter
GFI Circuit
Outside Recept (DS)
Emergency Start Switch
Lighted Trunk Storage Boxes
Patio Light
35,000 BTU E.I. Furnace (N/A 37SA)
20,000 BTU E.I. Furnace (2) (37SA ONLY)
13,500 BTU Roof Air Conditioner – Ducted

2nd 13,500 BTU Roof AC
Dual Coach Batteries
5.5 Onan Generator
Coach Command Center

AUTOMOTIVE/EXTERIOR

Tilt Steering Wheel
Cruise Control
Intermittent Wipers
High-Gloss Exterior Walls
22.5 Radial Tires & Rims
Valve Stem Extenders
Rear Mud Flaps Only
Power Entrance Step - Double
Crowned, Laminated Fiberglass Roof
Full Basement w/Pass-Through Storage
Aluminum Side-Hinge Trunk Doors
Fiberglass Front and Rear Caps
Dead Bolt Lock – Entrance Door
28" Radius Entry Door
Power Patio Awning
5,000 Towing Hitch w/ 7-Way Plug
Rear Mounted Roof Ladder
Heated Remote Exterior Mirrors
Automatic Leveling Jacks
Slide-Out Room Awning(s)
Full-Body Paint
20-Gallon LP Tank
Back-Up Monitor w/Side Cameras
Outside Entertainment w/32" TV & DVD
Bronze Dash Inserts
Cupholder on Passenger Wall
Cockpit Power Shade & Manual Side Shades
Round Cockpit Pedestal Table
Computer Workstation at Passenger Seat
Easy-Clean Cockpit Floor

OPTIONAL FEATURES

Stainless Steel Appliance Package w/Microwave
& Oven
Salon Drop-Down Bunk (37LS Only)
15,000 BTU A/C w/Heat Pump Front
15,000 BTU A/C w/Heat Pump Rear
39" Cockpit Mounted TV
Diamond Shield Protection
CSA Upfit
⁽¹⁾ CD-MVSA (Canadian Motor Vehicle Safety Act)
Travel Easy Roadside Assistance (Coach-Net)

Notes:

⁽¹⁾ Mandatory for All Canadian Provinces

STAINLESS APPLIANCE PACKAGE

Stainless Residential Refrigerator
Stainless OTR or Convection Microwave
Stainless Range/Oven or Cooktop
1,000-Watt Inverter w/2 Six-Volt Batteries

Interior Decor Color Selections



Cinnamon

Café Latte

Black Onyx

Interior Wood Color Selections



Coastal Glazed Maple

Spiced Maple

Honey Glazed Maple



FREE One-Year Membership – Coachmen Owners Association!

Coachmen is proud to sponsor the largest manufacturer-sponsored camping club in North America ... Coachmen Owners Association (COA). COA provides you a world of ways to enjoy your RV. This is **FUN ON OVERDRIVE** and provides: Free Trip Routing, Exciting Tours & Rallies, Free Campground Directory, Local/State Club Activities, Easy RVing Magazine Free, Theme

Park Discounts, Fuel Discounts, Free onebigplanet® Memberships with discounts at 180,000 merchants, and Much More!

Every new Coachmen RV buyer is eligible for a 1-Year FREE membership in the Coachmen Owners Association. It all adds up to an easy ownership experience!

SPECIFICATIONS

CLASS A GAS	36BH	37LS	37SA
2016 FORD ENGINE V-10 6.8L 3-Valve*	320 HP/460 TRQ	320 HP/460 TRQ	320 HP/460 TRQ
WHEELBASE	242"	242"	242"
GVWR	22,000 lbs	22,000 lbs	22,000 lbs
GCWR	26,000	26,000	26,000
FUEL CAPACITY	80 gal	80 gal	80 gal
LP GAS CAPACITY (gallons)	20 gal	20 gal	20 gal
FURNACE (BTUs)	34,000	34,000	(2) 20,000
EXTERIOR LENGTH (w/o ladder)	37' 4"	37' 4"	37' 4"
EXTERIOR HEIGHT (with AC)	12' 7"	12' 7"	12' 7"
EXTERIOR WIDTH	102"	102"	102"
FRESH WATER	70 gal	70 gal	70 gal
GREY WATER	45 gal	45 gal	45 gal
BLACK WATER	45 gal	45/45 gal	45 gal
WATER HEATER	10 gal	10 gal	10 gal
AWNING SIZE	14'	18'	22'

*2015 FORD ENGINE V-10 6.8L 3-Valve 362 HP/457 TRQ

GVWR (Gross Vehicle Weight Rating): The maximum permissible weight of the unit, including the unloaded vehicle weight (UVW) plus all fluids, cargo, optional equipment, and accessories. For safety and product performance, do not exceed the GVWR.

GCWR (Gross Combined Weight Rating): The maximum total weight of the loaded unit, plus a tow vehicle. This includes the weight of both the unit and tow vehicle, fuel for each, all other fluids, cargo, occupants, optional equipment, and accessories.

Important Note: All capacities are approximate, and all dimensions are nominal. Coachmen motorhomes are designed to allow for a wide variety of uses, extended trips with two people, or short trips with multiple people. Accordingly, each unit allows ample room for sleeping, seating, fluids, and cargo. While the customer is the beneficiary of this design, the customer also bears the responsibility to select the proper combination of passengers, cargo, load, and tow vehicle without exceeding the chassis weight capabilities. Consumer may need additional braking capacity to tow loads greater than 1,000 pounds.

Seat belts should always be worn for passenger safety. Seat belts are provided at most locations to allow convenience in selecting which

seat to occupy. However, it is not intended that all seating positions equipped with a seat belt may be occupied while the vehicle is in motion, without regard to other weight factors.

All Coachmen motorhomes are designed to ensure that the number of passengers allowed while the vehicle is in motion will always at least equal the stated sleeping capacity. Though extra seat belts may be provided, for your safety and the proper operation of your vehicle, limit your passengers to the number allowed by the Net Carrying Capacity of your vehicle.

All information contained in this brochure is believed to be accurate at the time of publication. However, during the model year, it may be necessary to make revisions and Coachmen reserves the right to make all such changes without notice, including prices, colors, materials, equipment, and specifications as well as the addition of new models and the discontinuance of models shown in this brochure. Therefore, please consult with your Coachmen dealer and confirm the existence of any materials, design, or specifications that are material to your purchase decision.

© Copyright 2016 Coachmen RV, a Division of Forest River, Inc. – All Rights Reserved



Forest River, Inc. encourages our customers to purchase their Forest River products from a local dealership whenever possible because of the following reasons:

1. Forest River, Inc. dealers are independently owned and operated businesses, so priority service and scheduling is at their discretion and is often provided to customers that purchased their unit at that dealership.
2. Purchasing locally allows customers to establish meaningful relationships with a dealer, enhancing the RV experience through assistance with product questions, user tips or RV regulations for your state or country, and much more!
3. Canadian customers must meet requirements to bring an RV purchased out of the country to their home. These requirements may involve additional inspections and certifications, taxes and fees. Your local Canadian dealer is a professional at meeting these requirements.
4. Scheduling timely warranty repairs and adjustments through a local dealership provides far greater flexibility and convenience to you, the customer!

It is the goal of Forest River, Inc. that all of our RV owners fully enjoy the RV experience and that customer satisfaction meets or exceeds their expectations!



Travel Easy™ Roadside Assistance!

RVing is easier with Coachmen's Travel Easy™ Roadside Assistance provided FREE the first year of ownership to those who purchase a New Coachmen RV. Administered by Coach-Net, this service provides you with 24/7 operational, technical and emergency road service coverage. Also included is towing, fuel delivery, jump starts, lockout service, tire changes, mobile mechanic, and unlimited technical assistance. Anywhere. Anytime. Travel Easy™ is the security of knowing that help is an easy phone call away.



Coachmen RV, a Division of Forest River, Inc.,
A Berkshire Hathaway Company
423 N. Main St., P.O. Box 30, Middlebury, IN 46540

To learn more about Coachmen RV and our products and see how Coachmen is making the easy life easier, visit www.coachmenrv.com.



Learn More
Scan this barcode using
a QR Reader on your
smart phone to learn
more about Forest River.

