

YOUR GUIDE TO SUCCESS WITH THE CROSS FIT CLASS B by COACHMEN RV – The Leader to the Great Outdoors!



The most comprehensive Class B Training Manual in the Class B segment!

Coachmen RV

LEADER TO THE GREAT OUTDOORS

DID YOU KNOW? COACHMEN RV PRODUCTS HAVE BEEN ON U.S. ROADS AND HIGHWAYS SINCE 1964!

- **COACHMEN RV...** Is built upon a simple principle “**Dedicated to the enrichment of your life.**” By providing you with long term value through all that we do, our focus is on delivering a product with superior value and backing it through superior service and support. Once you become a Coachmen owner, we are committed to enhancing your Coachmen RV ownership and lifestyle experience... creating friends for life and memories that will last a lifetime. At Coachmen RV you will find a rich history of commitment from our Team Members. This commitment extends to our owners and in the pride we have for our brand. The close relationship that we share with our owners and our dealers is a quality that others have been trying to mimic over our 50 year history. Our goals and principles remain well in focus. We create customers for life.
- **OUR HISTORY...**The first Coachmen RV products were manufactured in a 5,000 square foot plant in downtown Middlebury, Indiana, by Coachmen Industries, a company founded by three brothers: Tom, Keith and Claude Corson. Coachmen’s first year of production totaled 12 travel trailers, a single truck camper and 80 truck caps. Since then, over three quarters of a million Coachmen Recreational Vehicles have been produced and sold.
- **FOREST RIVER INC...**In December of 2008, Coachmen RV became a proud brand of Forest River, Inc., a Berkshire Hathaway company. Today, Coachmen RV, a division of Forest River, Inc., is headquartered in Middlebury, Indiana, with our primary manufacturing facilities occupying over 220 acres with more than 23 acres under roof serving as dedicated manufacturing facilities for Coachmen branded Class A Motorhomes, Class B Motorhomes, Class C Motorhomes, Fifth Wheels and Travel Trailers. Our Camping Trailers are manufactured in our Centerville, Michigan, manufacturing facilities occupying 90 acres.
- **A BRAND YOU CAN TRUST...**Coachmen RV products have been on North American roads and in North American campgrounds since 1964. With over five decades of building recreational vehicles. Over 600,000 RVs built and sold we know how to design and build a reliable RV with exceptional value, dependable design, practical innovation and the comforts and features you desire.

Ford 350HD Gas Transit



Warranties

Motorhome – 12 month/12,000 mile ltd.

Ford – 3 Year/36,000 mile Bumper to Bumper Warranty

Ford – 5 Year/60,000 mile Powertrain Warranty

Coachmen RV and Ford have combined their decades worth of experience to introduce CrossFit, a Class B Motorhome that offers the utmost in quality, luxury and value. The CrossFit is built on the award winning 350 Ford Gas Transit platform with a 3.7 Ti-VCT V6 Engine which delivers an impressive 275HP & 260FT. LBS. of torque while still providing excellent fuel economy of 16-18 MPG on the highway. CrossFit uses high end components like the Truma Combi Eco Plus furnace/water heater system, Marine Grade PVC wall vinyl, Sumo Spring Suspension and custom solid maple hardwood cabinetry!

CROSS FIT WHERE QUALITY AND VALUE ARE #1

FORD TRANSIT CHASSIS FEATURES

- 3.7L Ti-VCT V6 Engine 275 HP 260 FT-LB of Torque 5-Speed Automatic Transmission
- 6 Speed Auto Select Shift
- MPG 14 City/18 HWY
- Dual Rear Wheels/Rear Wheel Drive
- Sumo Spring Front and Rear Suspension
- 25 Gal Fuel Tank
- 148” Wheelbase
- 4.10 Rear Axle
- 195/75R 16 All Season Tires
- Brakes – Power 4 Wheel Disc w/ ABS
- HEAVY DUTY 250 AMP Alternator
- Dual 70AMP 760CCA (Cold Crank Amps) for combined 1520 CCA
- 3 Year/36,000 Mile Bumper to Bumper Warranty
- 5 year/60,000 Mile Powertrain Warranty

Safety Features of the Ford 350HD Gas Transit Chassis Continued...

FRONT SAFETY CANOPY side-curtain airbag...

The Safety Canopy System combines side-curtain airbags and a rollover sensor to help provide head protection for all outboard seating positions in certain side-impact and rollover situations. Front-seat side airbags help protect the torso and pelvis of front-seat occupants in certain side collisions. The airbags are located in the outboard side of the front seat backs, so they are always in the correct deployment position, no matter where the seat is positioned.

Advance Track with RSC...

Advance Track with RSC (Roll Stability Control) combines Advance Track electronic stability control and Roll Stability Control technologies to monitor vehicle cornering behavior and automatically make braking and throttle adjustments when it senses wheel slip, loss of traction or roll motion to help keep the vehicle on its intended path for enhanced driver control.

Lane Keeping Assist...

Warns the driver if the vehicle starts to drift into another lane and the turn signal has not been activated using a series of vibration pulses that are felt through the steering wheel and a visual indication (red line) in the message center.

Auto Lamp with Rain Sensing Windshield Wipers...

Wiper-activated headlamps automatically turn on the headlamps and tail lamps when the windshield wipers are being used — helping the driver see, and the vehicle to be seen, in inclement weather. Rain-sensing windshield wipers detect moisture on the windshield and activate the wipers to help increase driver visibility. Once the system is turned on, there is no need for the driver to activate, deactivate or adjust wiper speed under normal driving conditions.

Hill Start Assist...

Hill start assist automatically engages the brakes when the vehicle is started on an upward or downward slope to prevent it from rolling, whether in a forward gear or Reverse (R).

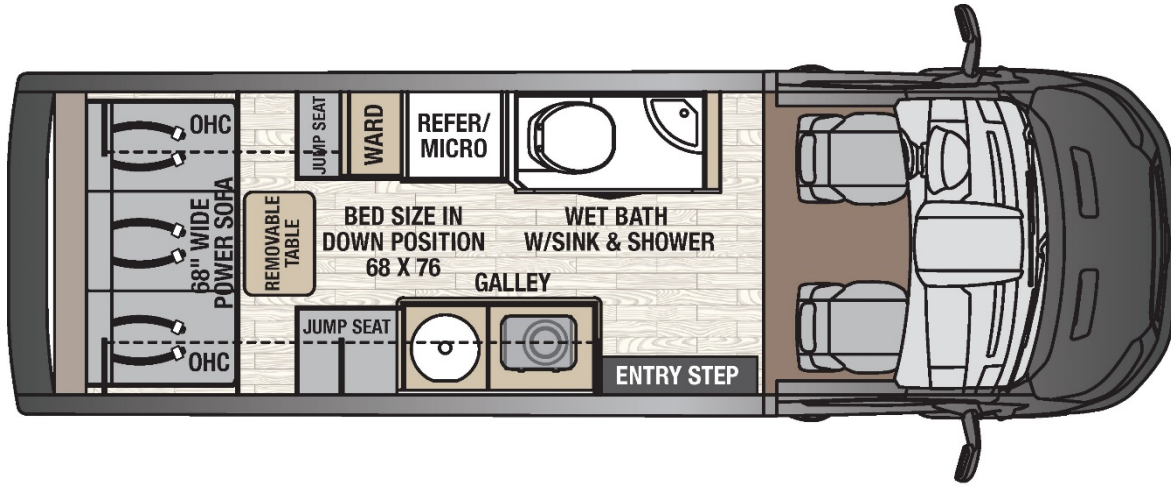
SOS Post-Crash Alert System...

The SOS Post-Crash Alert System automatically flashes the hazard lights and intermittently sounds the horn after an accident where the airbag(s) deploy(s) or when a properly engaged safety belt pretension is activated.

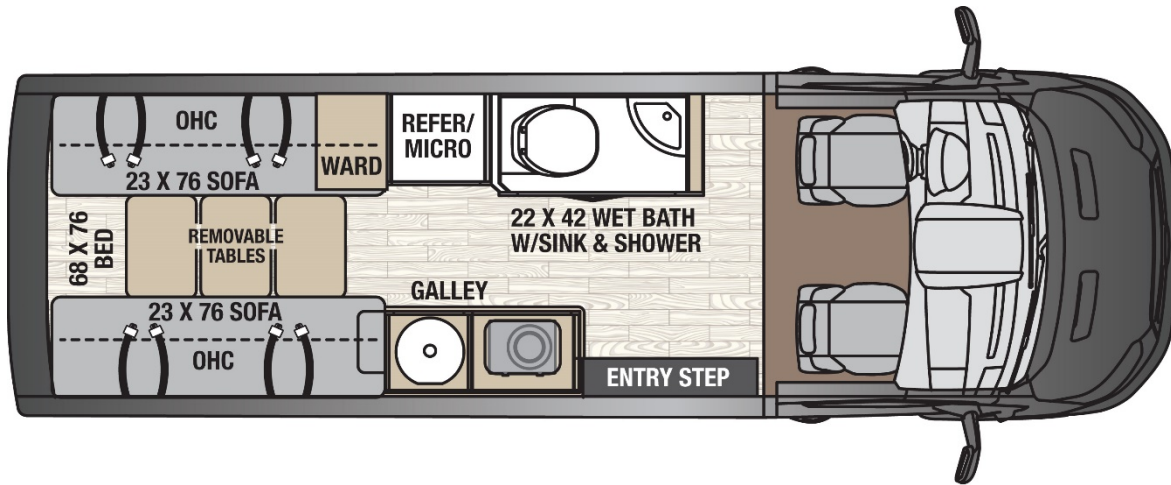
Side-Wind Stabilization...

Applies the brakes on one side of the vehicle to reduce the effect of a sudden side wind gust on the vehicle's path.

CROSSFIT FLOOR PLANS



22C
*Rear
Couch*



22D
*Rear
Dinette*

CROSSFIT COCKPIT FEATURES



Swivel Passenger Seat w/Standard Privacy Shades and overhead storage



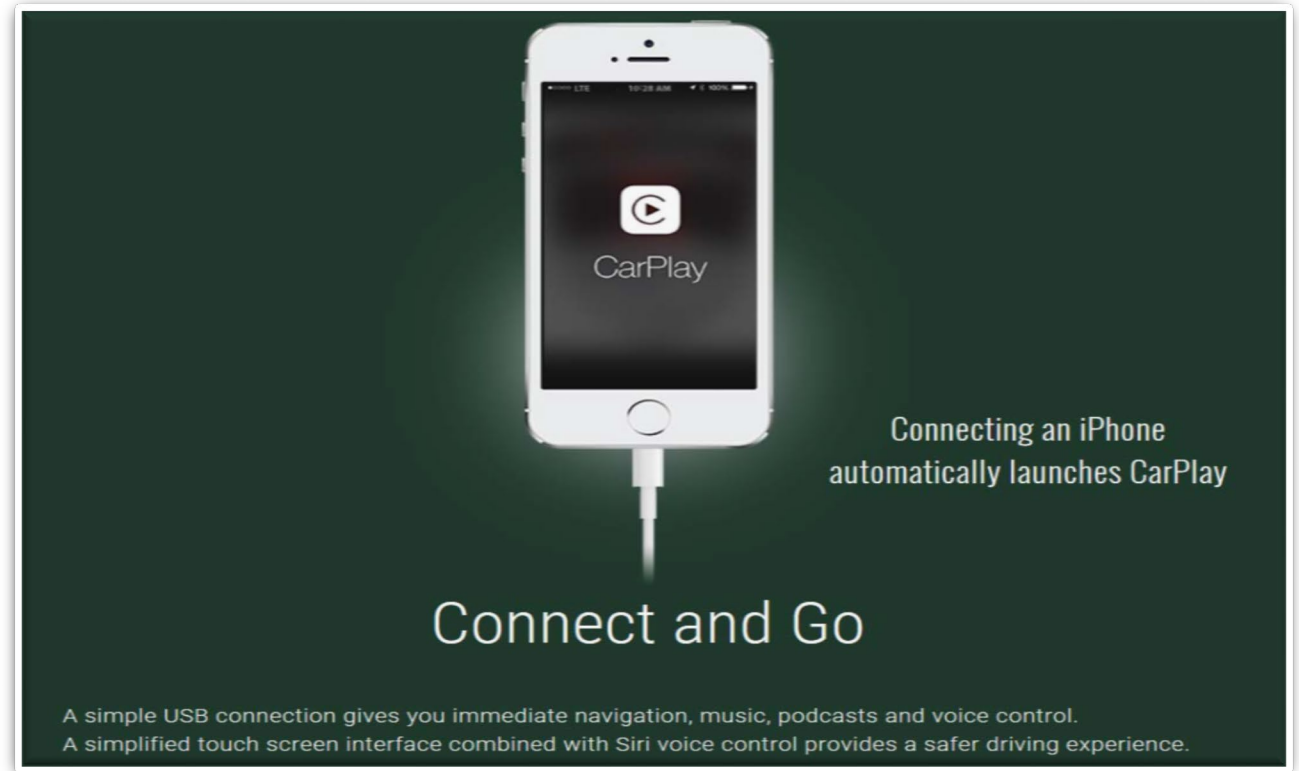
More Leg Room and Recline distance compared to Winnebago Paseo



KENWOOD meets Apple CarPlay™

Kenwood Car Play-Use Siri voice commands for directions for Apple and Android devices! More Car Play Information on the next page...

KENWOOD CAR PLAY FEATURES CONTINUED...



CarPlay is the smarter, safer in-vehicle interface to operate your iPhone, and now reaches another level by being featured in a KENWOOD multimedia receivers. Use Siri voice control to get directions, make phone calls, listen to voice mail, send/ receive messages and select music in a way that keeps you focused on the road ahead.

KENWOOD CAR PLAY CONTINUED....

Your Music and Entertainment



Tell Siri what you'd like to listen to. Access stored music, Podcasts, iTunes radio, and additional audio apps downloaded to your iPhone.

KENWOOD multimedia receivers include advanced audio features including digital time alignment, digital EQ and digital filters, to fine tune the sound system. In addition, with high voltage preouts a system can be expanded to include amplifiers and high quality speakers for an amazing in-car experience.

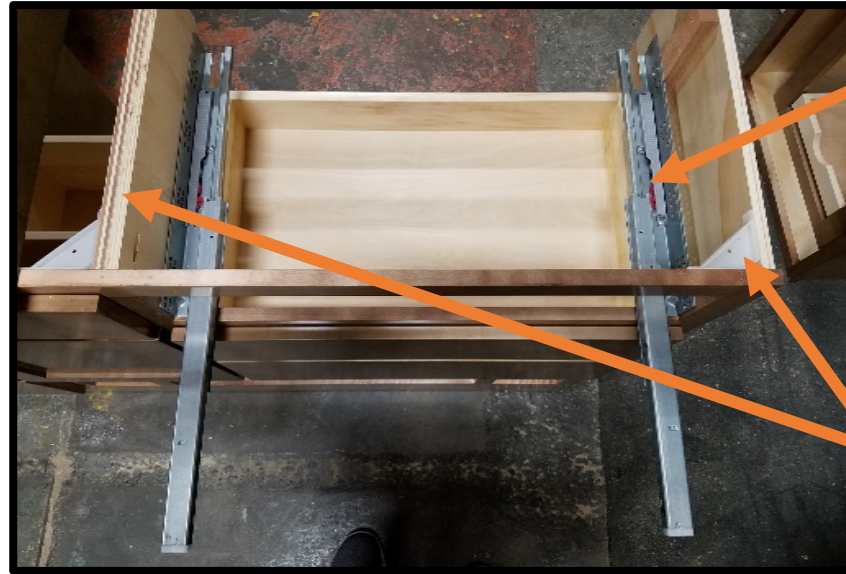
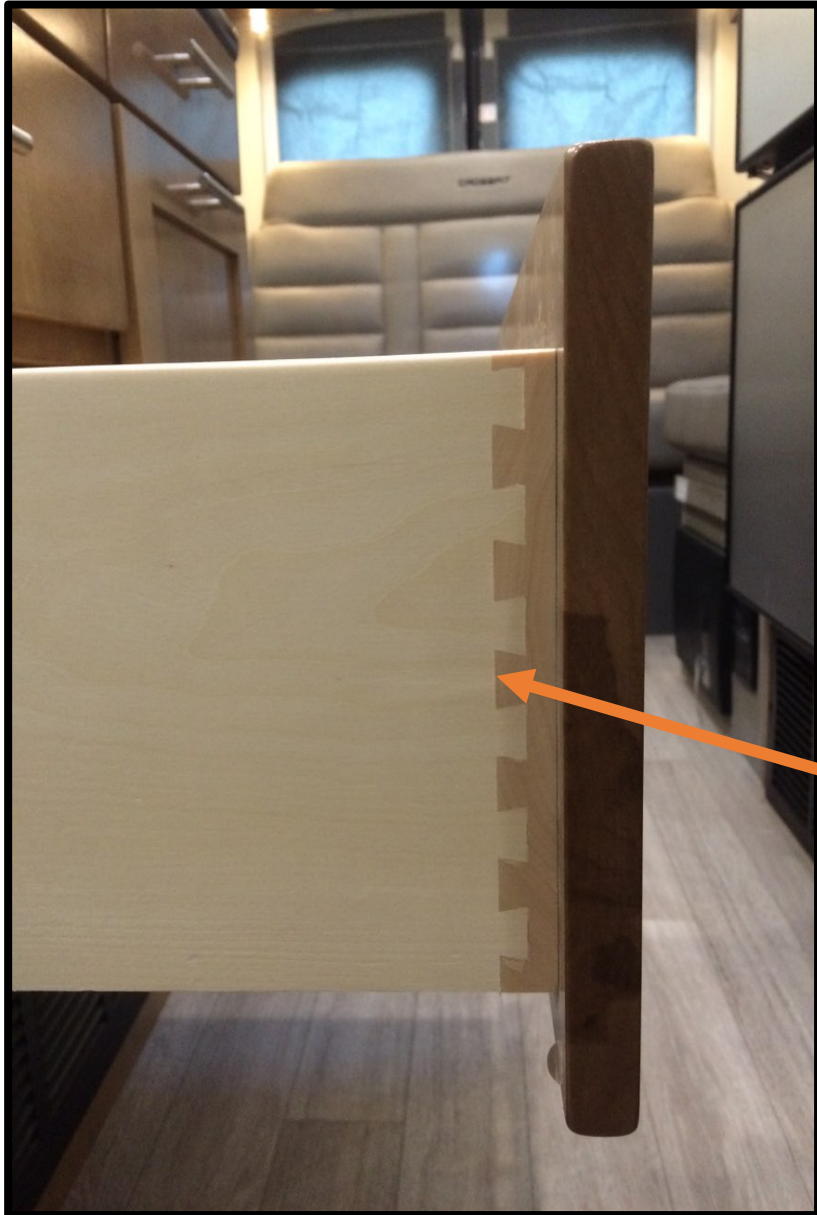


2-DIN Monitor Receiver with Bluetooth & HD Radio
DDX9703S

CLEAR RESISTIVE TOUCH PANEL	DUAL PHONE CONNECTION	SIRI EYES FREE	WIRELESS MUSIC Browsing	Detachable USB	RAPID CHARGE	13Band EQ	Drive EQ+	CAR PORTAL for iDataLink	HD Radio® This HD Radio receiver enables: HD2/HD3 Digital Sound Program Info Artist Experience Emergency Alerts
PARKING GuideLines	DUAL CAMERA INPUT	FLAC SUPPORT							
Works with Apple CarPlay	android auto	HDMI	MHL	Made for iPod iPhone	Bluetooth	SiriusXM READY			

CUSTOM HARDWOOD CABINETS-NO COMPARISON!

Unmatched Craftsmanship, High End Hardwood Materials, High End Residential Drawer Guides

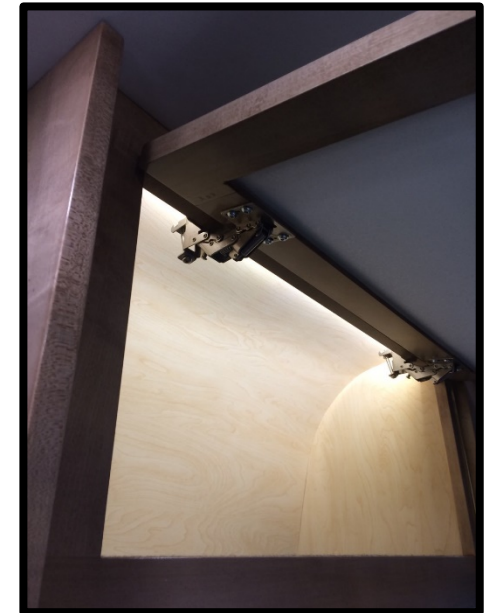


High End Residential Cabinet Components

- **NEW!** True Residential drawer guides. Not the cheap Travel Trailer 80lb. ball bearing drawer guides
- This drawer hardware will ensure your drawers will operate smoothly and hold up to the rigors of the road for the life of your coach.
- 7 Ply 5/8" DOMESTIC FURNITURE GRADE PLYWOOD-NOT FOUND IN THE RV SEGMENT!

True English Dove Tail drawer Construction

- 5/8" Western Aspen ENGLISH DOVE TAIL DRAWERS
- Superior construction and materials ensure your CROSSFIT cabinetry will last vs. competitions cabinetry



KITCHEN/CABINETRY/STORAGE-INDUSTRY LEADING CABINETRY QUALITY!



Unmatched Cabinetry Quality!

- ¾" Solid North American Maple Drawer Fronts
- Solid High Gloss Maple hardwood



Overhead Storage & Shirt Locker

- Solid Hardwood Cabinet Doors vs. Vinyl Wrap Stiles or Vinyl Wrapped MDF Doors
- Translucent Inserts Provide Accent Lighting from our 3 Colors of Mood Lighting
- Felt Lined over head cabinet bases
- Shirt Locker has Pre Hung Closet Bar and Removable Shelves
- Soft Close Overhead Doors
- All High Gloss Maple Finish
- Unmatched Quality



Trash Can Storage

- Every CROSSFIT has dedicated trash can storage in the kitchen base cabinet
- Also has additional storage for paper towels and trash bag boxes.
- Very residential

CROSSFIT NOVAL KOOL COMPRESSOR DRIVEN REFRIGERATORS



Nova Kool RFU 6100 Compressor Driven Refer-6 CF

- Compressor Driven
- Operates @ 30 DEGREE INCLINE-Great for Class B end users!
- Runs on 12V or 110
- Refer on top Freezer below
- Used on ALL CROSSFIT FLOOR PLANS
- The only refrigerator to be endorsed by Canadian Coast Guard
- Designed for Mobile and Off The Grid Applications
- 2 Year Warranty on All Parts
- Over 25 Years in business!
- Whisper Quiet
- Low Power Consumption

CROSSFIT BATHROOM-MORE FUNCTION vs. COMPETITION



Dual Shower Doors Extend Out 3" While In Use for More Shoulder Room. Also the dual doors make for a private and dry changing area!

43"W x 24"D One Piece Fiberglass Shower **NOT PLASTIC!**

Fiberglass Sink, Pull Out Faucet for Shower and Sink, Mirror, Soap/Shampoo Dispenser

CROSSFIT 22C POWER SOFA/POWER BED-TRUE COMFORT IN STYLE!

INDUSTRY FIRST TRUE “LAY FLAT POWER SOFA”

- **Lay Flat Sofa Dimensions 68”W x 76”L**
- **Largest Sleeping Available in the Gas Class B segment!**
- **True 180 degree LAY FLAT SOFA**
- **NO HUMPS / NO GAPS**
- **3 Inches of Increased Memory Foam**
- **3 Seat Belts and 2 Arm Rests**
- **2 Cup Holders Next to Sofa**
- **Built in Headrest for Additional Passenger Comfort**
- **All Furniture Material Rated @ 7 YR. Hydrolysis**
- **Easy to Maintain and Easy to Clean**



CROSSFIT 22D BED/DINETTE-TRUE COMFORT IN STYLE!



22D in Dinette Position



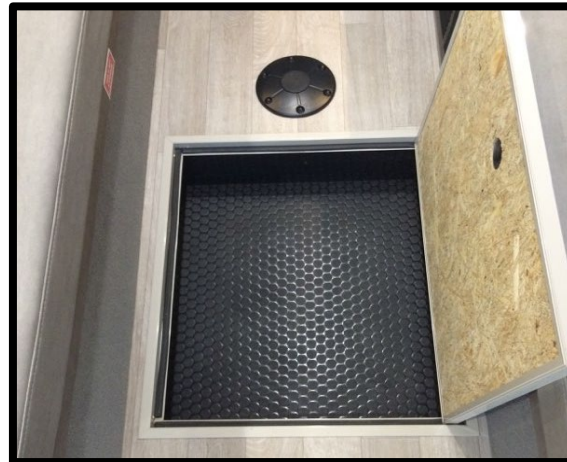
22D in Bed Position



22D From Rear of Coach
w/Storage



22D Headrest Extension



22D Lined Table Insert
Storage

TABLE SET UP ON CROSSFIT

22C TABLE SET UP



Removable Table

- Use as a work station or dinner table
- Lightweight
- Stored either under the floor 22D or behind the sofa on the 22C

22D TABLE SET UP



CONTROL PANEL LAYOUT AND FEATURES

Truma CP Plus Control for Truma Combi Eco Plus



Generator Start/Stop/ Hour Meter

Water Tank/Battery and LP Levels

Battery Disconnect

Go Power Solar Charger

Awning: Power/ Retract/ Extend/ Awning Lights

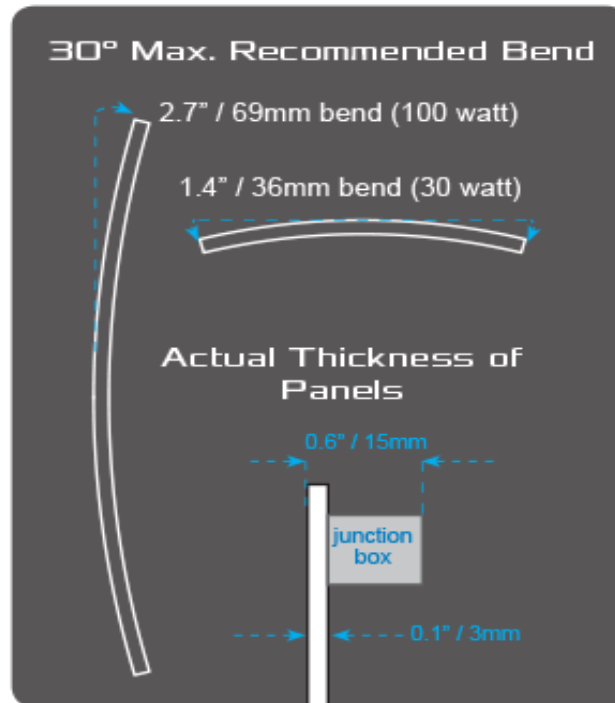
CROSSFIT SOLAR PANEL(S)



SOLAR FLEX™



**NEW! 12V/30AMP DIGITAL
SOLAR SINGLE STAGE
CONTROLLER**



100 W Standard
200 W Optional (*Retail \$535*)

SOLAR FLEX SOLAR PANELS FEATURE A 5 YEAR WARRANTY

TRUMA COMBI ECO PLUS FURNACE / HOT WATER HEATER



Truma Combi Eco Plus – The first forced-air combination furnace with integrated water heating function and with more than 20 years of reliable service in Europe and Australia. Truma Combi furnaces are the most energy-efficient and lightest heating systems on the market. They effectively combine warm air and hot water in one appliance. Truma Combi furnaces offer much more operating convenience by way of the digital control panel Truma CP plus.

How to use Your Truma CP plus

Truma.net

Combi® CP Plus Instructional Video

Up next

AUTOPLAY

How to Winterize a Truma-Combi System - Lichtsinn.com
Lichtsinn RV
3.1K views

Let's Talk Truma - Factory Answers for Technical
The Fit RV
26K views

Truma Combi CP Plus Heating Panel with the Swindon
Swindon Caravans Group
5.8K views

Using the Truma CP Plus Control Panel
TinTent
20K views

Truma AquaGo® on Rollin On TV: Kolbe's Episode
Truma USA



Unique Features

- Near-silent operation
- Lightweight, space-saving solution
- Maintains constant temperature throughout RV
- Optional electric heating for furnace and water
- Highest available energy efficiency of more than 90%
- Program your timer to have hot water ready.

Be sure to let your customers know there are many videos available on YouTube on the operation of the Truma CP PLUS

Onan QG 2800 Gasoline RV Generator



Cummins Onan RV QG 2800 (formerly Onan Microlite) Lightweight, Compact and Quiet RV Generator. Microprocessor control with diagnostics and lightweight, compact design. Quietest generator sets of their size. Easy maintenance with single-side service. Completely enclosed with muffler, quick and easy to install. 3-year limited warranty, Low fuel consumption, The RV QG 2800 is a 2800 watt gasoline generator.

- Microprocessor control with diagnostics and lightweight, compact design.
- Gasoline fueled.
- Quietest generator sets of their size.
- Easy maintenance with single-side service.
- Completely enclosed with muffler, quick and easy to install.
- 3-year limited warranty
- Low fuel consumption
- 2.8kW QG RV generator set will start and run one 13500 Btu high efficiency air conditioner (15.5 amps or less) plus 600 watt base load with an additional 300 watts of power available.

Warranty policy: This limited warranty covers virtually everything except routine maintenance for the first two years you own your RV generator set, and covers parts and labor on major powertrain and generator set parts during the third year. In addition, it also includes a free 90-day adjustment policy, which provides that Cummins Inc. will make minor adjustments during the first three months you own it - free of charge! Please note: This 3-year limited warranty applies to RV generator sets used in RV applications only, and does not apply to RV generator sets used in commercial mobile applications

ONAN RV QG 2800 Gas Generator Info.

ONAN RV QG 2800 Gas Generator

Microprocessor control with diagnostics and lightweight, compact design

- Gas Fueled
- Quietest generator sets of their size
- Easy maintenance with single-side service
- Completely enclosed with muffler, easy to install
- 3-year limited warranty
- Low fuel consumption

OIL/DIPSTICK

MANUAL START SWITCH w/CIRCUIT BREAKER BELOW



GENERATOR FEATURES • Cummins Onan sound-attenuating enclosure • Focalized mounting system with vibration isolators • Cross-flow cooling • Sheet steel drip controlling base • Enclosed muffler • Integral USDA Forest Service approved spark arrestor muffler • Adjustable mechanical governor • Automatic choke • Overhead cam • Single-side service • Low oil level shutdown • Electric fuel pump (gasoline) • Mounted control panel • Sealed remote start connector • Electric start • Fused DC circuits to protect set wiring and remote control wiring • Magnetic circuit breaker • Solid-state ignition • Standard onboard diagnostic capability

!!!CUSTOMER SERVICE TIP!!!
MAKE SURE TO TELL CUSTOMERS WITH GENERATORS THAT THEY NEED TO FIRE UP THE GENERATOR APPROX. 1 X PER MONTH TO ENSURE PROPER FUNCTIONING!!!

CROSSFIT BATTERIES



(2) 105AMP HOUR GROUP 31 BATTERIES

12 Month Free Replacement Warranty
Deep cycle capacity 105AH
Quick connect DT, SAE/M8 Stud, SAE/M8 Threaded Post, WNT terminals
Handle for easy transport and install
Group 31 - approximate dimensions of 13" x 6.75" x 9.5"
Deep Cycle BCI Group 31M Marine and Boat battery

- **Item Number:** SLI31MDC
- **Brand:** Duracell Ultra
- **Voltage:** 12
- **Format:** BCI Group 31M
- **Lead Acid Type:** Deep Cycle
- **Cold Cranking Amps:** 650
- **Battery Type:** Basic
- **Capacity 20hr:** 105AH
- **Chemistry:** Lead Acid
- **Cranking Amps:** 800
- **Lead Acid Design:** Flooded
- **Made in the USA:** True
- **Maintenance Free:** No
- **Marine Cranking Amps:** 800
- **Product Category:** Marine/RV
- **Product Sub Category:** Starting Lighting And Ignition
- **Terminal Type:** DT, SAE/M8 Stud, SAE/M8 Threaded Post, WNT
- **Warranty:** 12 Month Free Replacement
- **Weight:** 59 lbs.
- **Length:** 13 in
- **Width:** 6.75 in
- **Height:** 9.5 in

CROSSFIT MULTI-PLEX SYSTEM



Multi-Plex Panel Located Right as you Enter/Exit Individually Controls All Lighting Zones (2) Locations / No Switches to Search For!



2nd Multi-Plex Panel at TV/Bed for Easy Access to All Lighting Functions while Sleeping

COMPONENTS ON CROSSFIT CONTINUED...



PRIVACY SHADES AND
PULL DOWN BUG SCREEN



Standard Screen Door w/ Grab Handle and Motion Sensor/Security
Light at Step.



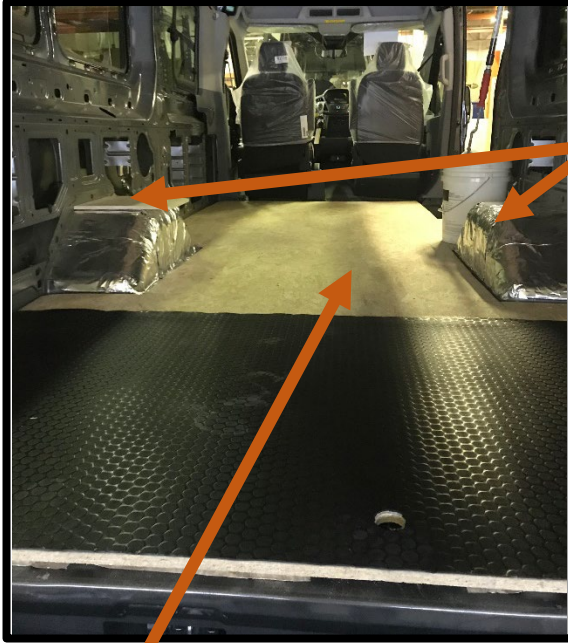
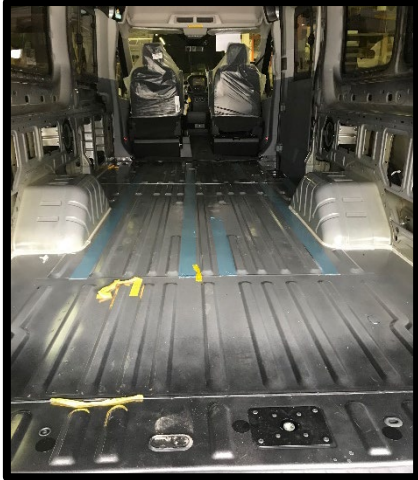
36" Door Opening Largest on the Ford Gas Class B
"X"=No Obstructions behind Passenger Seat

**User Tip: Always Use Teflon Spray Lubricant on the Screen Door
Tracks. Never Use Silicone Spray!**

CONSTRUCTION AND INSULATION MATERIALS CONTINUED.....

CHASSIS FLOOR/UNDERLAYMENT/FLOOR DECKING/INSULATION

RAW CHASSIS



HUSHMAT WHEEL WELL INSULATION

- DRASTICALLY REDUCES SOUND and VIBRATION FROM THE ROAD



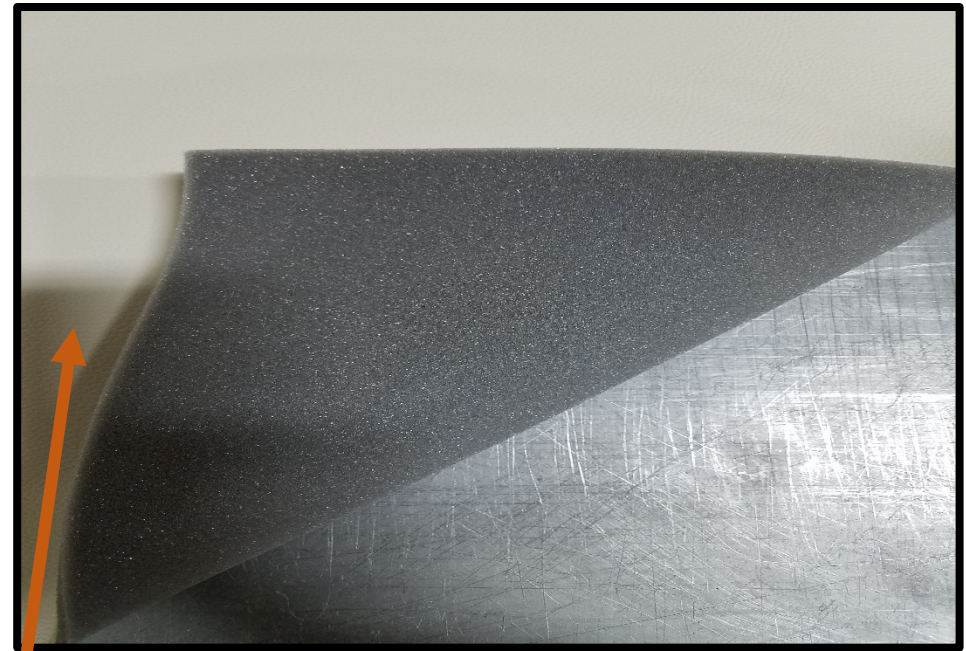
ONE PIECE 5/8" MARINE GRADE OSB FLOOR

- OSB Covers front to back and left to right
- No seams that will give way during the life of the chassis

ADDITIONAL SOUNDS DEADENING MAT UNDER OSB

- R-38 REFLECTIVE INSULATION LAMINATED TO UNDERLAYMENT
- REFLECTS THE HEAT AWAY IN SUMMER AND KEEPS THE HEAT IN FOR WINTER
- KEEPS ROAD VIBRATION AND SOUND TO A MINIMUM!

INDUSTRY FIRST MARINE GRADE PVC SIDEWALLS ADDED VALUE!!!



Marine Grade PVC Vinyl Interior Sidewall

- Will Never Absorb Moisture Like Cloth
- Will Never Absorb Odors Like Cloth
- Will Never Crack or Rattle like ABS
- Will Never Break Down
- Will Last Forever!
- Foam Backer for Added Insulation and Sound Deadening!

COMPONENTS ON CROSSFIT CONTINUED

WATER MANAGEMENT AREA

SATELLITE CONNECTION

BLACK TANK FLUSH CONNECTION VALVE
NOTE: DO NOT LEAVE YOUR HOSE CONNECTED TO BLACK TANK FLUSH FOR LONG PERIODS OF TIME OR YOU WILL OVER FILL YOUR BLACK TANK



CITY WATER CONNECTION FOR CITY WATER HOOK UP

FRESH WATER FILL TO FILL FRESH WATER TANK

COMPONENTS ON CROSSFIT CONTINUED...

OUTSIDE SHOWER

**Outside
Shower
with Quick
Disconnect**



Outside Shower Quick Disconnect Hose w/Sprayer
will be located in the rear upon delivery

TERMINATION VALVE, SEWER HOSE 45 DEGREE FITTING and SEWER HOSE STORAGE



ADD SEWER HOSE IN BOTH PICTURES W/ 45 FITTING

COMPONENTS ON CROSSFIT CONTINUED...



BACK UP CAMERA

- Back Up camera-
SAFETY FEATURE!

CAREFREE OF COLORADO AWNING

- STANDARD 13' (157") Electric Awning
- Motion Sensor feature will retract awning automatically in 10-15MPH winds
- No Legs to attach to side of coach
- 1 YEAR WARRANTY



Passenger Side Walk-Around

1. Re-enforced entry step with undercarriage L.E.D lighting
2. Sumo Spring Assist Suspension Front and Sumo Spring Rear Leaf Spring Suspension
3. Stainless steel wheel liners standard
4. External 110v outlet (GFI Reset Location)
5. Carefree armless power awning w/ LED lighting and wind sensor
6. Frameless Ford OEM vented windows

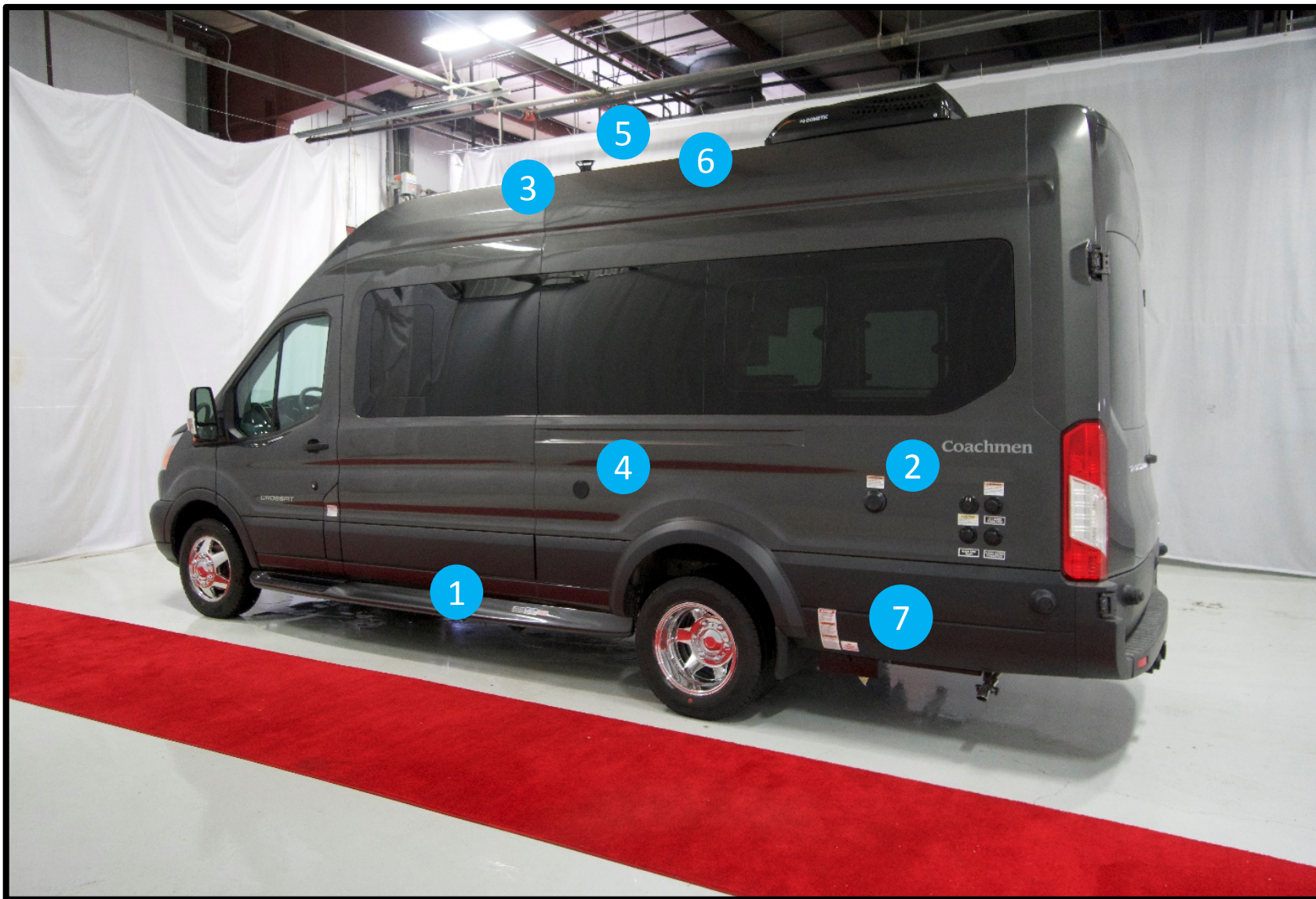
NOTES: _____



Rear of Coach Walk-Around

1. 5,000 lbs tow hitch 500 lbs. tongue weight w/ 7 Pin wiring
(Actual towing capacity limited by GCWR)
2. Rear pull down bug screen
3. 13,500 BTU Low Profile A/C
4. 2800 Onan Gas generator mounted under the rear of the coach/Runs off Transits 25 Gal. Fuel Tank
5. LP Fill/On and Off Switch

NOTES: _____



Drivers side Walk-Around

- 1. Termination Valve and Black and Grey Tank Valves**
- 2. 30 amp shore line service w/detachable power cord**
- 3. Syphon 360 Black Tank Vent**
- 4. Outside shower**
- 5. Winegard Roadster omni-directional TV antenna**
- 6. Go Power! 100W solar panel
OPTIONAL 200W
(Total)**
- 7. LP Fill On / Off Switch**

NOTES: _____

CROSSFIT STANDARD FEATURES



STANDARD: CAREFREE POWER AWNING



STANDARD: REAR SCREEN DOOR



STANDARD: SIDE SCREEN DOOR



STANDARD: DAY/NIGHT PULL UP PRIVACY SHADES



STANDARD: LP COOKTOP



STANDARD: MICROWAVE



STANDARD: FRONT AND REAR WHEEL SIMULATOR WHEEL COVERS

CROSSFIT OPTIONS



OPTION: UPGRADED FRONT AND SIDE WINDOW COVERS



OPTION: UPGRADED ALUMINUM WHEELS vs. SIMULATORS



OPTION: INDUCTION SINGLE BURNER STOVE TOP (2 YR. WARRANTY)



NEW OPTION: GO POWER 200W SOLAR (100W STD.)



OPTION: SUMMIT BIKE RACK



CROSSFIT Safety and Convenience



Every CROSSFIT includes the following for your protection

- **LP Leak Alarm:** Alerts you if there is an LP gas leak in the coach.
- **Fire Extinguisher:** ABC rated in the event of fire.
- **Smoke Detector:** Alerts you about smoke from a fire.
- **Carbon Monoxide Detector:** Alerts you to the presence of odorless carbon monoxide gas.
- **Coachmen's Travel Easy Roadside Assistance:** Provides 24/7 Operational, technical and emergency road service coverage.
- **System Control Center:** Allows you to monitor all of your LP, Generator and Water Tanks from one easy and convenient spot inside the coach.

CROSSFIT Warranty Breakdown

Ford Transit Chassis Warranty Breakdown

- 3 YEARS/36,000 MILES
- POWERTRAIN 5 YEARS/60,000 MILE

CROSSFIT MOTORHOME WARRANTY

- 12 MONTHS/12,000 MILES LTD.

CROSSFIT APPLIANCES/PARTS WARRANTY

- NOVAL KOOL REFER 2 YEAR WARRANTY
- TRUMA COMBI ECO PLUS/ALL /PART#C01285034/1 YR. WARRANTY FROM PURCHASE
CAN EXTEND TO 2 YEARS ONCE REGISTERED
 - DOMETIC 13.5 BTU AC/2 YR. WARRANTY
 - FANTASTIC FAN/7 YEAR WARRANTY
 - BEAUFLOUR LINO/7 YEAR WARRANTY
 - ONAN LP GENERATOR/3 YEARS-2000 HOURS
- PREMIERE SOFA/CHAIRS/3 YEAR-36,000 MILES
 - FUSION INFOTAINMENT SYSTEM/3 YEARS
 - CAREFREE OF COLORADO AWNING/1 YEAR
 - SOLAR PANELS/5 YEARS

TOP 10 CROSSFIT SALES FEATURES

1. Ford 3.7 Ti-VCT V6 Engine 275HP / 260 FT.LBS. of Torque
2. Dual Rear Wheels/Rear Wheel Drive for improved handling
3. Custom Solid Hardwood Cabinetry-No Wrapped Stiles or Vinyl Wrapped MDF doors!
4. Go Power! 100W solar panel with independent smart charging of coach batteries.
200W Optional.
5. Truma Combi Eco Plus furnace/water heating systems.
6. Onan Micro Lite 2800kw GAS generator
7. Sumo Spring Front and Rear Suspension for increased driving comfort and performance.
8. Kenwood Radio Featuring Apple Carplay, Android Auto, Bluetooth, Sirius/XM, Pandora
9. Largest Sleeping of ANY GAS CLASS B! 68"W x 76"L
10. PVC Vinyl Walls-Not Cloth which absorbs odors / Not ABS-Which rattles while driving