



MIRADA

BY COACHMEN

MIRADA
BY COACHMEN



CoachmenRV.com

THE COACHMEN ADVANTAGE

What is the Coachmen advantage? It's the collection of unique features offered in a Coachmen motorhome to ensure a smoother ride, a better camping experience, and a motorhome that will last for years.

1. NOBLE SELECT™

Protected by a three-year warranty, these sidewalls have a high-gloss gelcoat finish to prevent fading. They are also 20% lighter than wood substrate sidewalls, provide more occupant cargo carrying capacity, and offer three times the insulation against extreme climates.

2. AZDEL™ COMPOSITE

Most manufacturers use wood sidewalls that can expand, swell, and eventually mold. We use Azdel. It's impervious to water, won't rot or mold, and, with less than a 1% chance of delaminating, it ensures the long-term integrity of the sidewalls.

3. REINFORCED LAMINATION

We vacuum bond and pinch roll every sidewall and roof, then perform a pull adhesion test. Most manufacturers just do one process or the other, but by doing both we improve the strength and longevity of the sidewalls.

4. ELONGATED WHEELBASE

We offer longer wheelbases than other motorhome manufacturers because that means superior weight distribution. The result? Better handling and a smoother ride that results in less driver fatigue.

5. SIGHT RITE DASH™

Our dashes are angled 20 degrees forward. This increases the line of sight for the driver, and offers the best road visibility on the market.

6. EVEN COOL DUCT™

Our patented duct system evenly disperses air through the whole coach. And we use Amaco ducting instead of Styrofoam because it's antimicrobial, preventing the growth of bacteria and ensuring a cool, clean coach in even scorching heat.

7. DIGITAL OWNER'S MANUAL

Our owner's manuals are easy to access through the Coachmen website or our free app. Supplemented with videos, PowerPoints, and more, it's got all you need to know about your coach.

EXTERIOR COLOR OPTIONS



Partial Paint with Graphics –
Champagne (Standard)



Full Body Paint –
Avalanche (Optional)

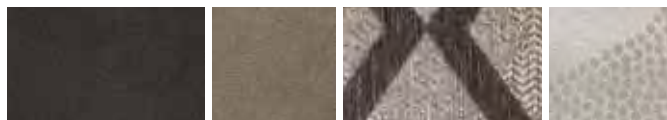


Full Body Paint –
Bordeaux (Optional)



Full Body Paint –
Bourbon (Optional)

INTERIOR DECOR COLOR SELECTIONS



Mineral

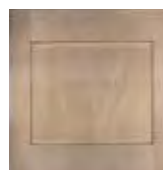


Flagstone

INTERIOR WOOD COLOR SELECTIONS



Slate Cherry



Driftwood

DON'T SETTLE FOR MIDDLE-OF-THE-ROAD.

MIRADA IS FOR MOTORHOME ENTHUSIASTS WHO APPRECIATE THE FINER ASPECTS OF HIGHWAY LIFE — AT A SURPRISINGLY AFFORDABLE PRICE.



Entertaining is a breeze with a beautifully appointed kitchen. The exterior kitchen and outdoor entertainment system (available in select floorplans) are perfect for taking the party outside. When not entertaining friends, stay connected with them from the dash computer workstation, complete with 12V, 110V, and USB outlets. There's even room for the kids to sleep over with the optional drop-down cabover bunk.



Spacious exterior storage compartments make it easy to haul extra gear without taking up extra space inside.

An optional outdoor entertainment system — complete with a 32" or 40" LED TV (depending on floorplan) and integrated awning speakers — is a great way to take advantage of the great outdoors.

The super durable Tread Lite™ Power Step makes it easy to board and exit safely.

Navigating through tight spaces and backing up is a breeze with Mirada's backup monitor and side cameras.



Photography features the Mirada 35OS floorplan with Flagstone decor and Slate Cherry cabinets.



The upgraded foam package in our leatherette dinette provides the perfect setting for dinner with guests.

We've made use of every inch of Mirada's floorplan, which means more storage for you — including a pantry that converts into an area for a stackable washer/dryer (35OS).

Built from stainless steel and porcelain, the bathroom is both appealingly designed and super-easy to clean.

Equipped with a comfortable mattress and designer headboard with coordinating bedspread and shams, Mirada's bedroom is the perfect place to sleep after a day in the woods or on the town.

The bedroom features a spacious wardrobe and side tables to keep clutter at bay and has a 32" LED TV.

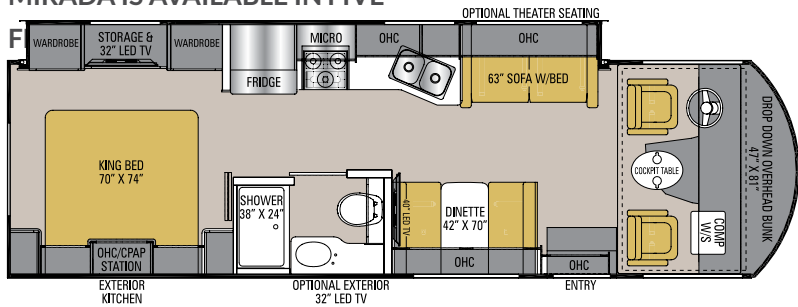
The Coach-Pap™ Station allows for storage of CPAP machines and other electronics, located in the cabinet above the bed.

Mirada's living area has plenty of seating for family and guests. Theater seating, standard in the 35OS and available on other floorplans, is ideal for reclining with a movie on the LED TV after a long day on the road.

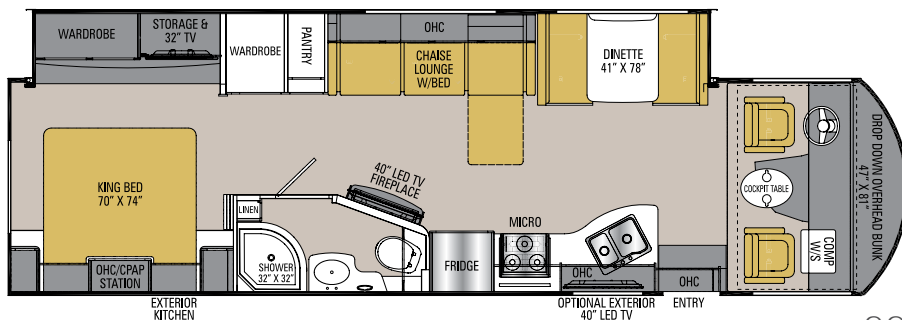
Convert the sofa into a bed to provide even more sleeping capacity.



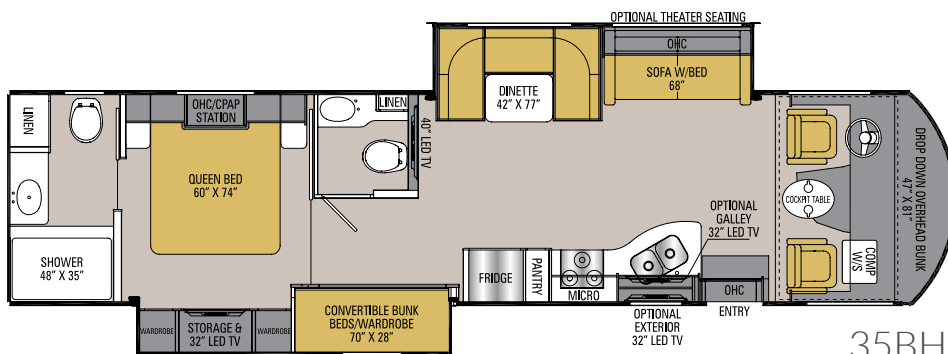
MIRADA IS AVAILABLE IN FIVE



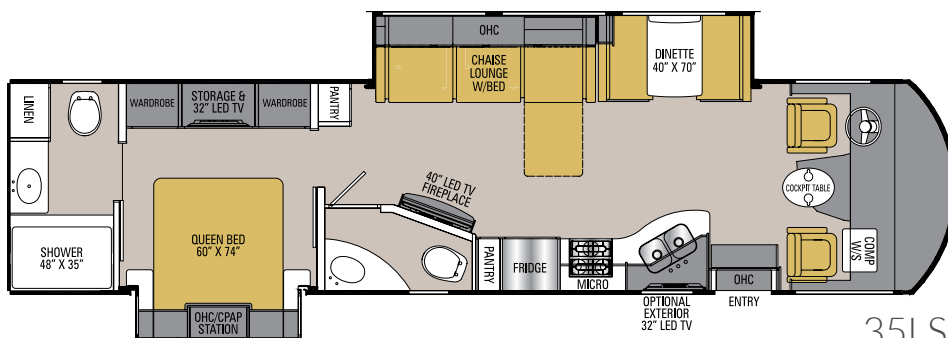
29FW



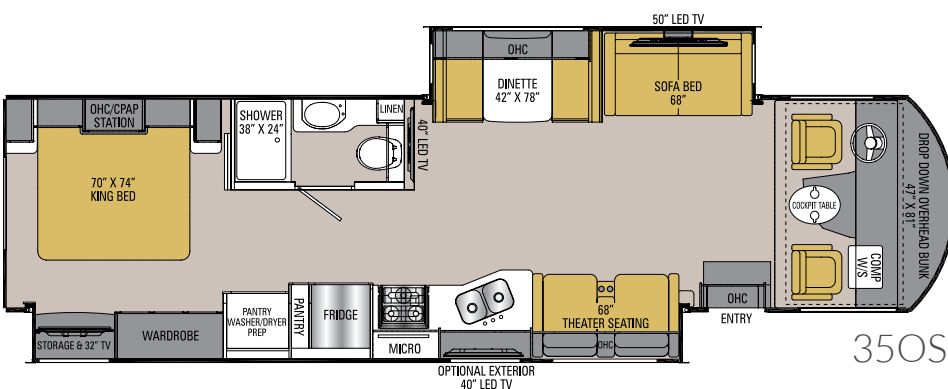
32SS



35BH



35LS



35OS

Mirada is available in five floorplan options, so you can choose the one that best suits your preferences.

FLOORPLANS



STANDARD FEATURES

INTERIOR APPOINTMENTS

Solid Surface Kitchen Countertop
Premium Linoleum Throughout
Brushed Nickel Hardware
Hardwood Cabinet Doors
Self Closing Ball Bearing Drawer Guides
Throughout
Frameless Tinted Windows with Safety Glass
Reclining/Swivel Pilot Seats
Visionary Sofa Hide-A-Bed
Solar Privacy Shades Throughout
Easy Clean Cockpit Floor
Power Windshield Shade

INTERIOR EQUIPMENT

Radio AM/FM/Bluetooth
Pre-Wired for Satellite Dish & Blu-ray Players
Cable TV Jack
LP Leak Alarm and Smoke Detector
Carbon Monoxide Detector
Fire Extinguisher
King Jack TV Antenna
40" LED TV Coach
50" LED TV Main Coach (35OS)
Horseshoe Booth Dinette (35BH)
Dream Dinette(n/a 35BH)
Electric Fireplace (32SS, 35LS)
19" TV with DVD player in each bunk
(35BH Only)
Charging Station for Electronic Devices

GALLEY

High Rise Kitchen Faucet
Double Bowl Stainless Kitchen Sink
Solid Surface Range and Sink Covers
8 cu. ft. Gas/Electric Refrigerator (29FW)
Residential Refrigerator (n/a 29FW)
30" OTR Microwave
Tile Backsplash

BATH AND WATER

Stainless Lavatory Sink
Porcelain Toilet with Foot Flush
One Piece ABS Shower Surround
Glass Shower Door
Power Bath Vent
6-Gallon Gas/Electric D.S.I. Water Heater
Demand Water Pump
Skylight Over the Shower
Stackable Washer/Dryer Prep (35OS Only)
Whole Coach Water Filter (EXC. CSA)

SLEEPING

Queen Bed 60W X 74L (35BH, 35LS)
King Bed 70W X 74L (29FW, 32SS, 35OS)
Bunk Beds Convert to Wardrobe (35BH)
Upgraded Mattress
Coach-Pap™ Station
Designer Headboard (29FW, 32SS, 35OS)
32" LED TV Bedroom

ELECTRICAL/HEATING/AC

30' 50-Amp Power Cord
55-Amp, 110/12-Volt Power Converter
GFI Circuit
Outside Receptacle (DS)
Emergency Start Switch
Lighted Trunk Storage Boxes
Exterior LED Strip Light
30,000 BTU E.I. Furnace
13,500 BTU Ducted Roof A/C
2nd 13,500 BTU Roof A/C
Dual Coach Batteries
5.5KW Onan Generator
Coach Command Center
Automatic Transfer Switch
1000 Watt Inverter
with (2) 6-Volt Batteries (n/a 29FW)
Auto Generator Start (n/a 29FW)

AUTOMOTIVE/EXTERIOR

Auxiliary Dash Fans
Tilt Steering Wheel
Cruise Control
Intermittent Wipers
Dash Air Conditioning
19.5" Radial Tires
Rear Mud Flaps Only
Power Entrance Step-Double
Crowned, Laminated Fiberglass Roof
Full Basement with Pass Through Storage
Radius Trunk Doors with Slam Latch
High Gloss 'Champagne' Sidewalls
Fiberglass Front Cap and Rear Cap
Dead Bolt Lock-Entrance Door
26" Radius Entry Door
Power Patio Awning
Towing Hitch with 7-Way Plug
Back Up Monitor with Side Cameras
Rear Mounted Roof Ladder
Power Heated Mirror
Stainless Steel Wheel Liners
Automatic Leveling Jacks
Slide-Out Room Awnings
20-Gallon LP Tank
Valve Stem Extenders
Exterior Kitchen (29FW and 32SS Only)
Refrigerator, Sink, and Propane Hook-Up
Oval Cockpit Pedestal Table
Computer Work Station at Passenger Seat
High Gloss Gelcoat Sidewalls
(with Azdel™ Superlight Composite)
Exterior Propane Hook-Up

OPTIONAL FEATURES

INTERIOR COLOR SELECTIONS

Mineral
Flagstone

INTERIOR WOOD COLOR SELECTIONS

Slate Cherry
Driftwood

EXTERIOR COLOR SELECTIONS

Partial Paint (Standard)
Full Body Paint (Optional)

- Avalanche
- Bordeaux
- Bourbon

OPTIONAL FEATURES

Power Drop-Down Front Bunk Bed (n/a 35LS)
Theater Seating (29FW & 35BH ONLY)
Dual Pane Windows
15,000 BTU A/C with Heat Pump Front
15,000 BTU A/C with Heat Pump Rear
6-Way Power Driver Seat
32" LED TV Galley Overhead Cabinet
(35BH Only)
Outside Entertainment Center
Convenience Package (Mandatory Option)

- Wifi Ranger
- Solar Prep
- Stainless Steel Appliances
- Exterior Speakers
- Interior Speakers
- Bedroom Radio

Diamond Shield Paint Protection -
(Required with Full Paint)
CSA Upfit
CD-MVSA (Canadian Motor Vehicle Safety Act)¹
Travel Easy Roadside Assistance -
provided by Coach-Net

Notes:

¹Mandatory For All Canadian Provinces

MIRADA SPECIFICATIONS

| CLASS A GAS | 29FW | 32SS | 35BH | 35LS | 35OS |
|-------------------------------|----------------|----------------|----------------|----------------|----------------|
| FORD ENGINE V-10 6.8L 3-VALVE | 320 HP/460 TRQ | 320 HP/460 TRQ | 320 HP/460 TRQ | 320 HP/460 TRQ | 320 HP/460 TRQ |
| WHEEL BASE | 190" | 228" | 242" | 242" | 242" |
| GVWR | 18,000 lbs | 20,500 lbs | 22,000 lbs | 22,000 lbs | 22,000 lbs |
| GCWR | 23,000 lbs | 26,000 lbs | 26,000 lbs | 26,000 lbs | 26,000 lbs |
| FUEL CAPACITY | 80 gal | 80 gal | 80 gal | 80 gal | 80 gal |
| LP GAS CAPACITY | 20 gal | 20 gal | 20 gal | 20 gal | 20 gal |
| FURNACE (BTUs) | 30,000 | 30,000 | 30,000 | 30,000 | 30,000 |
| EXTERIOR LENGTH (w/o Ladder) | 30' 7" | 34' 10" | 36' 10" | 36' 10" | 36' 10" |
| EXTERIOR HEIGHT (w/A/C) | 12' 5" | 12' 5" | 12' 5" | 12' 5" | 12' 5" |
| EXTERIOR WIDTH | 102" | 102" | 102" | 102" | 102" |
| FRESH WATER | 50 gal | 70 gal | 70 gal | 70 gal | 70 gal |
| GREY WATER | 46 gal | 45 gal | 45/45 gal | 45 gal | 45 gal |
| BLACK WATER | 46 gal | 45 gal | 45/45 gal | 45/45 gal | 45 gal |
| WATER HEATER | 6 gal | 6 gal | 6 gal | 6 gal | 6 gal |
| AWNING SIZE | 20' | 13' & 10' | 12' | 18' | 20' |
| EXTERIOR STORAGE | 131 cu. ft. | 125 cu. ft. | 105 cu. ft. | 126 cu. ft. | 145 cu. ft. |

GVWR (Gross Vehicle Weight Rating) is the maximum permissible weight of the unit when fully loaded. It includes all weights, inclusive of all fluids, occupants, cargo, optional equipment and accessories. For safety and product performance do NOT exceed the GVWR.

GCWR (Gross Combined Weight Rating) is the maximum permissible loaded weight of your motor home and any towed trailer or towed vehicle. Actual GCWR of this vehicle may be limited by the sum of the GVWR and the installed hitch receiver maximum capacity rating; see hitch rating label for detail.

GAWR (Gross Axle Weight Rating) is the maximum permissible weight, including cargo, fluids, optional equipment and accessories that can be safely supported by each axle.

UVW (Unloaded Vehicle Weight) * is the typical weight of the unit as manufactured at the factory. It includes all weight at the unit's axle(s), including full fuel, all fluids and LP Gas. The UVW does not include cargo, fresh potable water, additional optional equipment or dealer installed accessories.

*Estimated Average based on standard build optional equipment.

CCC (Cargo Carrying Capacity) ** is the amount of weight available for fresh potable water, cargo, passengers, additional optional equipment and accessories. CCC is equal to GVWR minus UVW. Available CCC should accommodate fresh potable water (8.3 lbs per gallon). Before filling the fresh water tank, empty the black and gray tanks to provide for more cargo capacity.

** Estimated average based on standard build optional equipment

Each Coachmen motorhome is weighed at the manufacturing facility prior to shipping. A label identifying the unloaded vehicle weight of the actual unit and the cargo carrying capacity is applied to every Coachmen motorhome prior to leaving our facilities.

The load capacity of your unit is designated by weight, not by volume, so you cannot necessarily use all available space when loading your unit.

Actual towing capacity is dependent upon your particular loading and towing circumstances, which includes the GVWR, GAWR and GCWR as well as adequate trailer brakes. Please refer to the Operator's Manual of your vehicle for further towing information.

All information contained in this brochure is believed to be accurate at the time of publication. However, during the model year, it may be necessary to make revisions and Coachmen reserves the right to make all such changes without notice, including prices, colors, materials, equipment and specifications as well as the addition of new models and the discontinuance of models shown in this brochure. Therefore, please consult with your Coachmen dealer and confirm the existence of any materials, design or specifications that are material to your purchase decision. 11/18

©Copyright 2018 Coachmen RV a Division of Forest River Inc. - All Rights Reserved.

CUSTOMER SATISFACTION



www.ForestRiverBuyLocal.com



FREE MEMBERSHIP
www.coachmenowners.com



Travel Easy™ Roadside Assistance

RVing is easier with Coachmen's Travel Easy™ Roadside Assistance provided FREE the first year of ownership to those who purchase a New Coachmen RV. Administered by Coach-Net, this service provides you with 24/7 operational, technical and emergency road service coverage. Also included is towing, fuel delivery, jump starts, lockout service, tire changes, mobile mechanic and unlimited technical assistance. Anywhere. Anytime. Travel Easy™ is the security of knowing that help is an easy phone call away.



Learn More
Scan this barcode using a QR Reader on your smart phone to learn more about Forest River.



A Berkshire Hathaway company.



Coachmen
Leader to the Great Outdoors.

Coachmen RV, a Division of Forest River, Inc.,
A Berkshire Hathaway Company

423 N. Main St., P.O. Box 30, Middlebury, IN 46540

To learn more about Coachmen RV and our products and see how Coachmen is making the easy life easier, visit www.coachmenrv.com