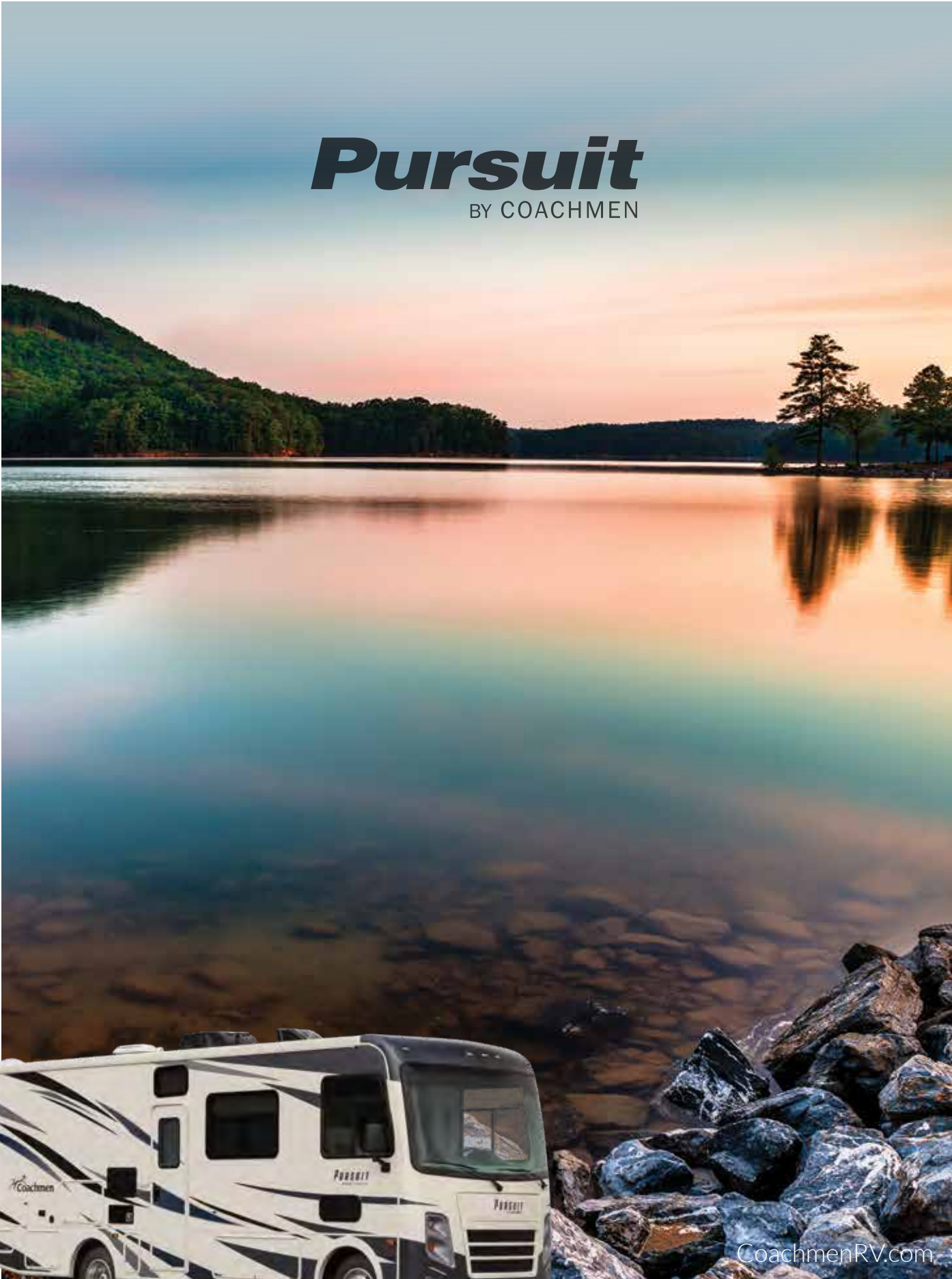




Pursuit

BY COACHMEN



Pursuit
BY COACHMEN



CoachmenRV.com

THE COACHMEN ADVANTAGE

What is the Coachmen advantage? It's the collection of unique features offered in a Coachmen motorhome to ensure a smoother ride, a better camping experience, and a motorhome that will last for years.

1. NOBLE SELECT™

Protected by a three-year warranty, these sidewalls have a high-gloss gelcoat finish to prevent fading. They are also 20% lighter than wood substrate sidewalls, provide more occupant cargo carrying capacity, and offer three times the insulation against extreme climates.

2. AZDEL™ COMPOSITE

Most manufacturers use wood sidewalls that can expand, swell, and eventually mold. We use Azdel. It's impervious to water, won't rot or mold, and, with less than a 1% chance of delaminating, it ensures the long-term integrity of the sidewalls.

3. REINFORCED LAMINATION

We vacuum bond and pinch roll every sidewall and roof, then perform a pull adhesion test. Most manufacturers just do one process or the other, but by doing both we improve the strength and longevity of the sidewalls.

4. ELONGATED WHEELBASE

We offer longer wheelbases than other motorhome manufacturers because that means superior weight distribution. The result? Better handling and a smoother ride that results in less driver fatigue.

5. SIGHT RITE DASH™

Our dashes are angled 20 degrees forward. This increases the line of sight for the driver, and offers the best road visibility on the market.

6. EVEN COOL DUCT™

Our patented duct system evenly disperses air through the whole coach. And we use Amaco ducting instead of Styrofoam because it's antimicrobial, preventing the growth of bacteria and ensuring a cool, clean coach in even scorching heat.

7. DIGITAL OWNER'S MANUAL

Our owner's manuals are easy to access through the Coachmen website or our free app. Supplemented with videos, PowerPoints, and more, it's got all you need to know about your coach.

EXTERIOR COLOR OPTIONS

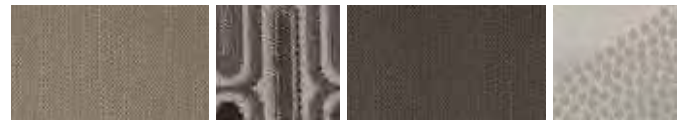


Partial Paint with Vinyl Graphics –
Champagne (Standard)

INTERIOR DECOR COLOR SELECTIONS



Intercoastal



Sandbar

INTERIOR WOOD COLOR SELECTIONS



Slate Cherry



Driftwood

THERE ARE NO SMALL THINGS WHEN IT COMES TO PURSUIT.

IN DESIGNING PURSUIT, WE TOOK CARE OF EVERY DETAIL. THE RESULT?
AN EXPERIENCE THAT WILL SURPRISE AND DELIGHT YOU AT EVERY TURN.



Cooking in the Pursuit is a breeze, thanks to generous cabinet and countertop space. A backsplash and stainless steel appliances and fixtures add a touch of style. The outdoor entertainment system is perfect for watching the game outside. The dash includes a computer workstation with 12V, 110V, and USB outlets, perfect for when you want to stay connected.



Spacious exterior storage compartments make it easy to haul extra gear without taking up space inside.

An optional outdoor entertainment system, complete with a large LED TV, is the perfect way to kick back after a day exploring.

The super durable Tread Lite™ Power Step makes it easy to board and exit safely.



Photography features the Pursuit 27DS floorplan with Intercoastal decor and Driftwood cabinets.



Pursuit's spacious dinette provides a comfortable place to enjoy meals.

With stainless steel and porcelain touches, the bathroom is both tastefully designed and easy to clean.



A designer headboard adds a touch of style to the comfortable bedroom, which includes a king mattress (select floorplans). Storage space has been optimized, giving you more options for long distance trips.

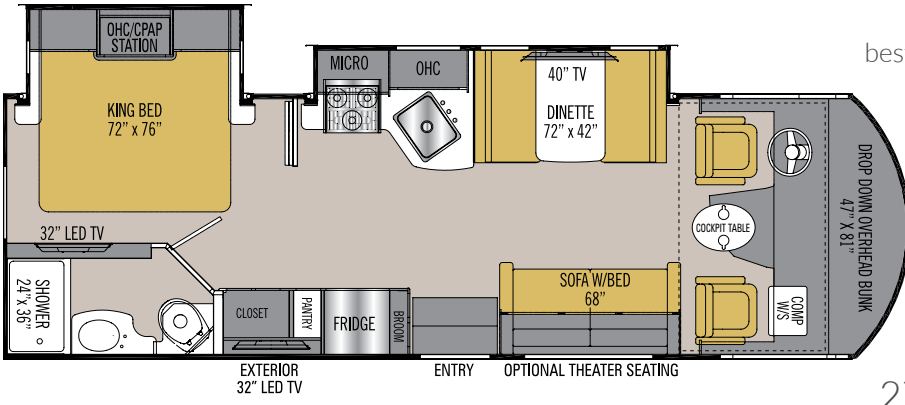
The Coach-Pap™ Station allows for storage of CPAP machines and other electronics, located in the cabinet above the bed.



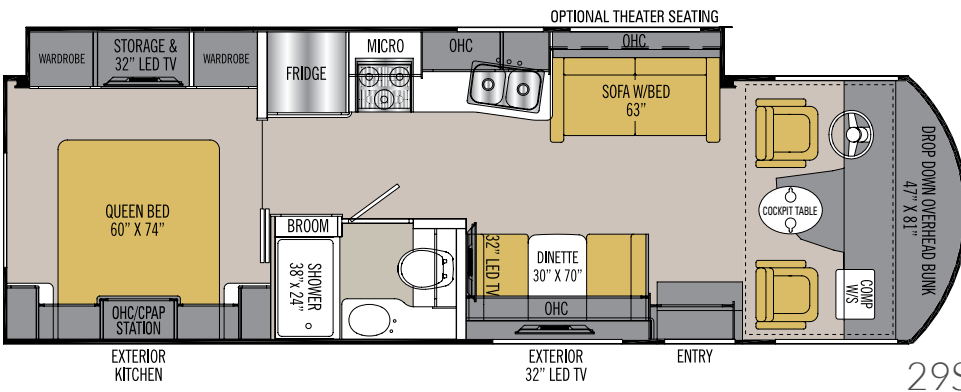
Pursuit's drop-down bunk is designed to provide an additional sleeping quarter while maximizing space when not in use.

Pursuit is available in four floorplan options, so you can choose the one that best suits your preferences.

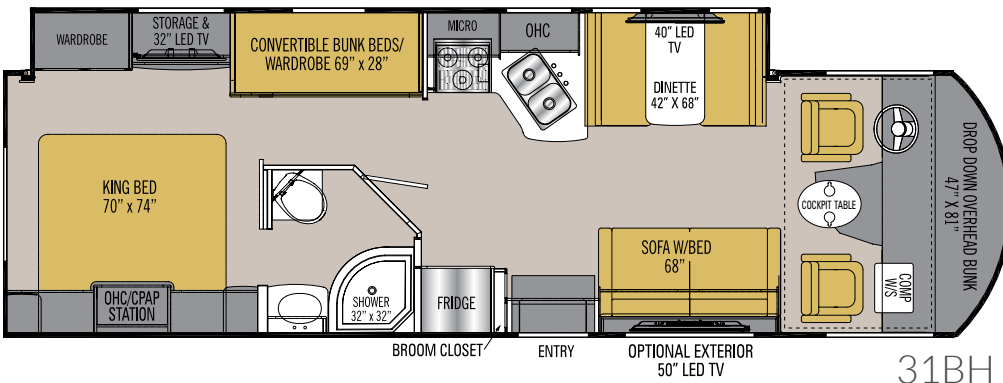
FLOORPLANS



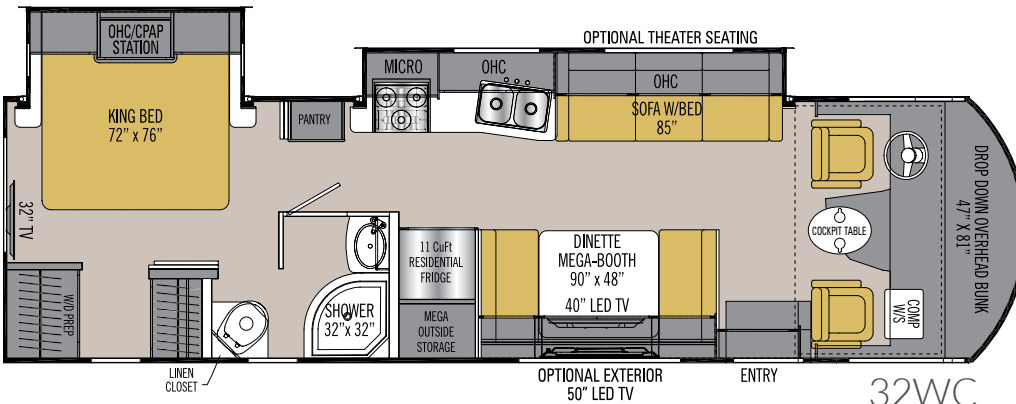
27DS



29SS



31BH



32WC

STANDARD FEATURES

INTERIOR APPOINTMENTS

Power Drop-Down Front Bunk
Self Closing Ball Bearing Drawer Guides
Throughout
Thermofoil Countertops Throughout
Premium Linoleum Throughout
Brushed Nickel Hardware
Hardwood Cabinet Doors/Flat Panel
Radius Slider Windows with Safety Glass
Reclining/Swivel Pilot Seats
Soft Touch Jackknife Sofa
Privacy Roller Shades Coach
Dream Booth Dinette (27DS, 29SS, 31BH)
Mega Booth Dinette (32WC)
Oval Cockpit Pedestal Table
Easy Clean Cockpit floor

INTERIOR EQUIPMENT

Radio AM/FM/Bluetooth
Pre-Wired for Satellite Dish and Blu-ray Players
Exterior Cable TV Jack
LP Leak Alarm and Smoke Detector
Carbon Monoxide Detector
Fire Extinguisher
King Jack TV Antenna
Fantastic Vent with Shroud in Coach
40" LED TV Coach (27DS, 31BH, 32WC)
32" LED TV Coach (29SS)
Edison Bulb Entry Light
Charging Station for Electronic Devices
Mud Room at Stepwell
Broom Closet (31BH)

GALLEY

Range Hood with Light
8 cu. ft. Large Double Door Refrigerator
High Rise Kitchen Faucet
Stainless Steel Kitchen Sink
3-Burner Range
Microwave Oven
Recessed Glass Range Cover

BATH AND WATER

Porcelain Toilet with Foot Flush
One Piece ABS Shower Surround
Retractable Shower Door
Power Bath Vent
6-Gallon Gas/Electric D.S.I. Water Heater
Demand Water Pump
Skylight Over the Shower
Stainless Lavatory Sink
Outside Shower
Black Tank Flush

SLEEPING

Upgrade Mattress
King Bed (27DS, 31BH, 32WC)
Queen Bed (29SS)
Designer Headboard
32" LED TV Bedroom
Coach-Pap™ Station
Bedroom Radio AM/FM/Bluetooth
with Outside Speakers

ELECTRICAL/HEATING/AC

Automatic Transfer Switch
55-Amp Converter with Distribution Panel
GFI Circuit
Outside Receptacle
Emergency Start Switch
Exterior LED Strip Light
30,000 BTU E.I. Furnace
15,000 BTU Ducted Roof A/C
Dual 12V Coach Batteries
4.0KW Onan Generator
Coach Command Center
LED Interior Lights

AUTOMOTIVE/EXTERIOR

Computer Work Station with USB, 12V, 120V
Tilt Steering Wheel
Cruise Control
Intermittent Wipers
Dash Air Conditioning
Cab Privacy Shades
Back Up Monitor with Side Cameras
Radial Tires
Rear Mud Flaps Only
Power Entrance Step-Single
Crowned, Laminated TPO Roof
Radius Trunk Doors
Fiberglass Front Cap
High Gloss Oyster Sidewalls
Dead Bolt Lock-Entrance Door
26" Radius Entry Door
Power Patio Awning
50 AMP Package (29SS)
Rear Mounted Roof Ladder
Power Heated Mirrors
Rear Bumper
Stainless Steel Wheel Liners
Slide-out Room Awning(s) Where Applicable
20-Gallon LP Tank
Valve Stem Extenders
High Gloss Gelcoat Sidewalls
(with Azdel™ Superlight Composite)
Exterior Propane Hook-Up
Outside Entertainment Center (27DS, 29SS)
8,000 lb. Towing Hitch with 7-Way Plug (27DS)
5,000 lb. Towing Hitch with 7-Way Plug
(29SS, 31BH, 32WC)

OPTIONAL FEATURES

INTERIOR COLOR SELECTIONS

Intercoastal
Sandbar

INTERIOR WOOD COLOR SELECTIONS

Slate Cherry
Driftwood

OPTIONAL FEATURES

50 AMP PACKAGE (INCLUDES)¹ (31BH, 32WC)

- 50-Amp Power Cord
 - 5.5KW Onan Generator
 - Two 13,500 BTU Air Conditioners
- 15,000 BTU A/C with Heat Pump Front
(31BH, 32WC)
15,000 BTU A/C with Heat Pump Rear
(31BH, 32WC)
Frameless Tinted Windows with Safety Glass
(31BH, 32WC)
Outside Entertainment Center with 50" TV
(31BH, 32WC)
6-Way Power Drivers Seat (31BH, 32WC)
Theater Seating (n/a 31BH)
Automatic Leveling Jacks (31BH, 32WC)
CSA Upfit
CD-MVSA (Canadian Motor Vehicle Safety Act)²
Travel Easy Roadside Assistance -
provided by Coach-Net

CONVENIENCE PACKAGE

(MANDATORY 31BH, 32WC
STANDARD 27DS, 29SS)

- Wi Fi Ranger
- Solar Prep
- Stainless Steel Appliances
- Interior Speakers in Bedroom
- Bedroom Radio

Notes:

¹ Mandatory For 32WC

² Mandatory For All Canadian Provinces

PURSUIT SPECIFICATIONS

CLASS A GAS	27DS	29SS	31BH	32WC
FORD ENGINE V-10 6.8L 3-VALVE	320 HP/460 TRQ	320 HP/460 TRQ	320 HP/460 TRQ	320 HP/460 TRQ
WHEEL BASE	178"	190"	190"	208"
GVWR	16,000 lbs	18,000 lbs	18,000 lbs	18,000 lbs
GCWR	23,000 lbs	23,000 lbs	23,000 lbs	23,000 lbs
FUEL CAPACITY	80 gal	80 gal	80 gal	80 gal
LP GAS CAPACITY	20 gal	20 gal	20 gal	20 gal
FURNACE (BTUs)	30,000	30,000	30,000	30,000
EXTERIOR LENGTH (w/o Ladder)	28' 9"	30' 3"	31' 9"	32' 6"
EXTERIOR HEIGHT (w/A/C)	12'	12'	12'	12'
EXTERIOR WIDTH	102"	102"	102"	102"
FRESH WATER	50 gal	50 gal	50 gal	50 gal
GREY WATER	76 gal	35 gal	38 gal	76 gal
BLACK WATER	38 gal	35 gal	38 gal	38 gal
WATER HEATER	6 gal	6 gal	6 gal	6 gal
AWNING SIZE	19'	20'	20'	20'
EXTERIOR STORAGE	65 cu. ft.	63 cu. ft.	96 cu. ft.	104 cu. ft.

GVWR (Gross Vehicle Weight Rating) is the maximum permissible weight of the unit when fully loaded. It includes all weights, inclusive of all fluids, occupants, cargo, optional equipment and accessories. For safety and product performance do NOT exceed the GVWR.

GCWR (Gross Combined Weight Rating) is the maximum permissible loaded weight of your motor home and any towed trailer or towed vehicle. Actual GCWR of this vehicle may be limited by the sum of the GVWR and the installed hitch receiver maximum capacity rating; see hitch rating label for detail.

GAWR (Gross Axle Weight Rating) is the maximum permissible weight, including cargo, fluids, optional equipment and accessories that can be safely supported by each axle.

UVW (Unloaded Vehicle Weight) * is the typical weight of the unit as manufactured at the factory. It includes all weight at the unit's axle(s), including full fuel, all fluids and LP Gas. The UVW does not include cargo, fresh potable water, additional optional equipment or dealer installed accessories.

*Estimated Average based on standard build optional equipment.

CCC (Cargo Carrying Capacity) ** is the amount of weight available for fresh potable water, cargo, passengers, additional optional equipment and accessories. CCC is equal to GVWR minus UVW. Available CCC should accommodate fresh potable water (8.3 lbs per gallon). Before filling the fresh water tank, empty the black and gray tanks to provide for more cargo capacity.

** Estimated average based on standard build optional equipment

Each Coachmen motorhome is weighed at the manufacturing facility prior to shipping. A label identifying the unloaded vehicle weight of the actual unit and the cargo carrying capacity is applied to every Coachmen motorhome prior to leaving our facilities.

The load capacity of your unit is designated by weight, not by volume, so you cannot necessarily use all available space when loading your unit.

Actual towing capacity is dependent upon your particular loading and towing circumstances, which includes the GVWR, GAWR and GCWR as well as adequate trailer brakes. Please refer to the Operator's Manual of your vehicle for further towing information.

All information contained in this brochure is believed to be accurate at the time of publication. However, during the model year, it may be necessary to make revisions and Coachmen reserves the right to make all such changes without notice, including prices, colors, materials, equipment and specifications as well as the addition of new models and the discontinuance of models shown in this brochure. Therefore, please consult with your Coachmen dealer and confirm the existence of any materials, design or specifications that are material to your purchase decision. 11/18

©Copyright 2018 Coachmen RV a Division of Forest River Inc. - All Rights Reserved.

CUSTOMER SATISFACTION



www.ForestRiverBuyLocal.com



FREE MEMBERSHIP
www.coachmenowners.com



Travel Easy™ Roadside Assistance

RVing is easier with Coachmen's Travel Easy™ Roadside Assistance provided FREE the first year of ownership to those who purchase a New Coachmen RV. Administered by Coach-Net, this service provides you with 24/7 operational, technical and emergency road service coverage. Also included is towing, fuel delivery, jump starts, lockout service, tire changes, mobile mechanic and unlimited technical assistance. Anywhere. Anytime. Travel Easy™ is the security of knowing that help is an easy phone call away.



Learn More
Scan this barcode using a QR Reader on your smart phone to learn more about Forest River.



A Berkshire Hathaway company.



Coachmen RV, a Division of Forest River, Inc.,
A Berkshire Hathaway Company

423 N. Main St., P.O. Box 30, Middlebury, IN 46540

To learn more about Coachmen RV and our products and see how Coachmen is making the easy life easier, visit www.coachmenrv.com